



TIPS & TRIKS – NYHETER FRA M3 DEVELOPMENT OG CLOUD DELIVERY

Teams Meeting 15 September 2021

Lena Lundell - InfoTeam

Björn Torold, Magnus Tallqvist, Per Melander - Infor

Disclaimer

This presentation reflects the direction Infor may take with regard to the products or services described herein, all of which is subject to change without notice. This presentation is not a commitment to you in any way

and you should not rely on any content herein in making any decision.

Infor is not committing to develop or deliver any specified enhancement, upgrade, product, service or functionality, even if such is described herein. Many factors can affect Infor's product development plans and the nature, content and timing of future product releases, all of which remain in the sole discretion of Infor. This presentation, in whole or in part, may not be incorporated into any agreement. Infor expressly disclaims any liability with respect to this presentation.

Dagens ämnen

Inledning

Senaste nytt från fältet angående M3 Cloud

API Tools & MRP

DataLake and Streaming – Direktrapport från projektet

Lärdomar från Cloud Projekt – Henrik Holmberg

Admin Homepage

What's New

Announcements

ION API Performance

ION API Traffic

ION API Errors

Purchase Requisition

Event driven Statistics

Customer & Partner Tables

New List Panel Standard

1300+ Bookmarks

Profile Inform...

FnF
407 M3 13.2 FNF-ION integratio...
AAA Config (407/AAA)
10.2.1.0.16
BE 15.1.3 MCP1-1513-05

infor TORBJOO [logout] Grid EMD-Grid
Infor ION Grid 11.1.13.0.40 Server time Mon Jun 01 10:05:00 CEST 2015

SOFTWARE UPDATE

My Daily Work - CC

My Menu

- My Purchase Orders
- Stopped Sales Orders
- Preliminary Customers
- Stopped EDI Orders
- Customer master
- Item Master
- MI Test

Sales Monitors

- Preliminary Customers (6)
- Stopped Sales Orders (3)
- Orders over \$750 (7)
- Delayed Sales Orders (10)
- Sales Orders Rolling 7 Days (10)

Workflow Activity Locator

Select a Task or ION Notification in the Tasks Widget to view the content here

redhat LINUX stgreSQL

Update

SEPTEMBER 2021

Infor M3 Cloud Edition

Infor **CloudSuite**



M3 Cloud Edition Customers

Customers provisioned with M3 Cloud Edition

242⁽⁷²⁾



Usability Features Delivered

** Developments for Technology and User Experience

99



Total Countries Supported

Countries Supported with M3 CloudEdition

68



Capability Features Delivered

** Developments for Integrations and Geo Support

542



Total Integrations supported

Strategic Integrations with Best-of-Breed and 3rd Party

24

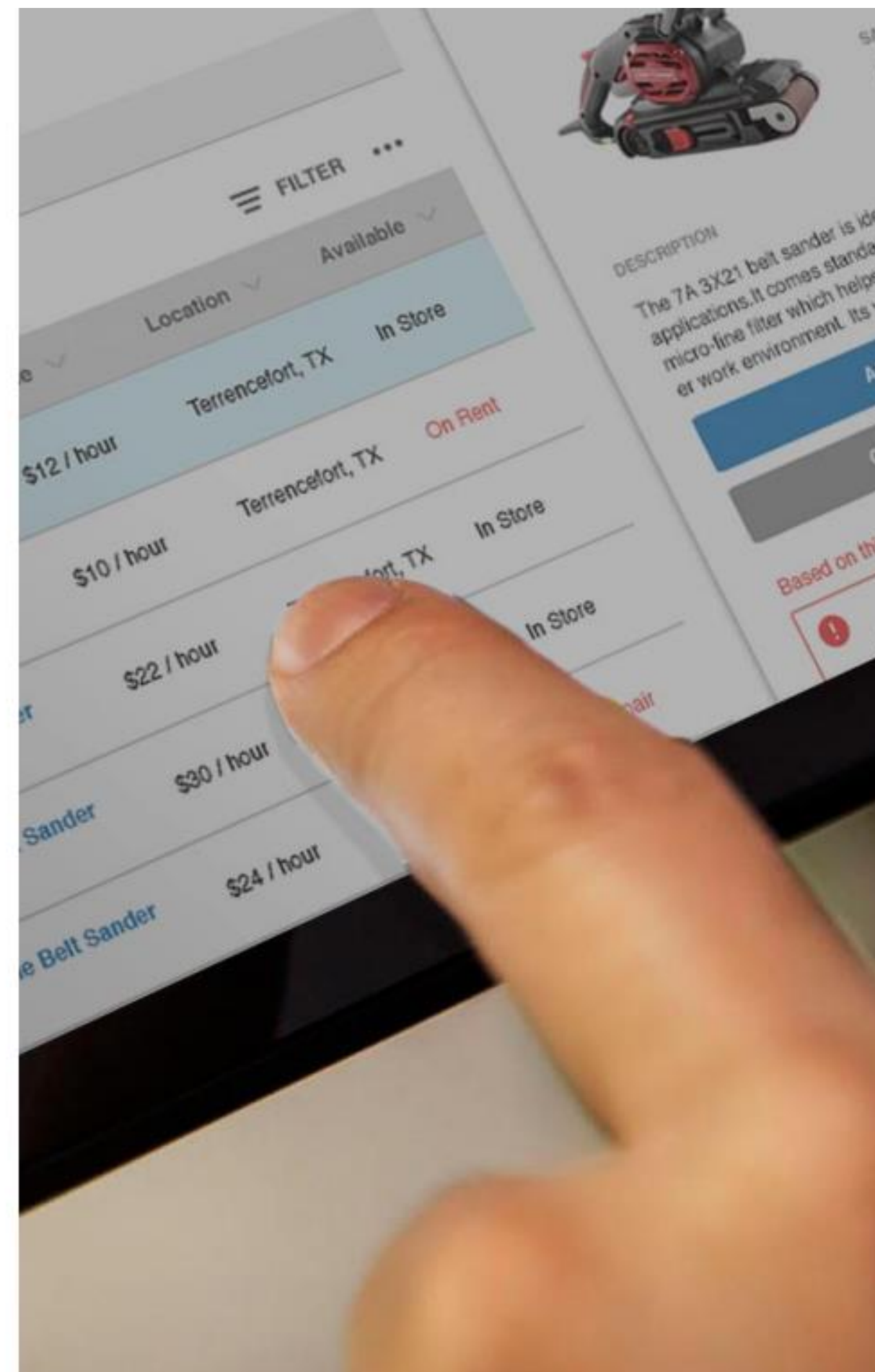


Industry Features Delivered

** Developments of Industry Features

825

** Since the first launch of M3 Cloud Edition



Americas

- Argentina
- Bolivia
- Brazil*
- Canada
- Chile
- Colombia
- Ecuador
- Guatemala
- Honduras
- Mexico
- Panama
- Peru
- USA

Europe

- Austria
- Belgium
- Bulgaria
- Croatia
- Czech Republic
- Denmark
- Finland
- Estonia
- France
- Germany
- Greece
- Hungary
- Ireland
- Italy
- Latvia
- Lithuania
- Luxembourg
- Monaco
- Netherlands
- Norway
- Poland*
- Portugal
- Romania
- Russia*
- San Marino
- Serbia
- Slovakia
- Slovenia
- Spain

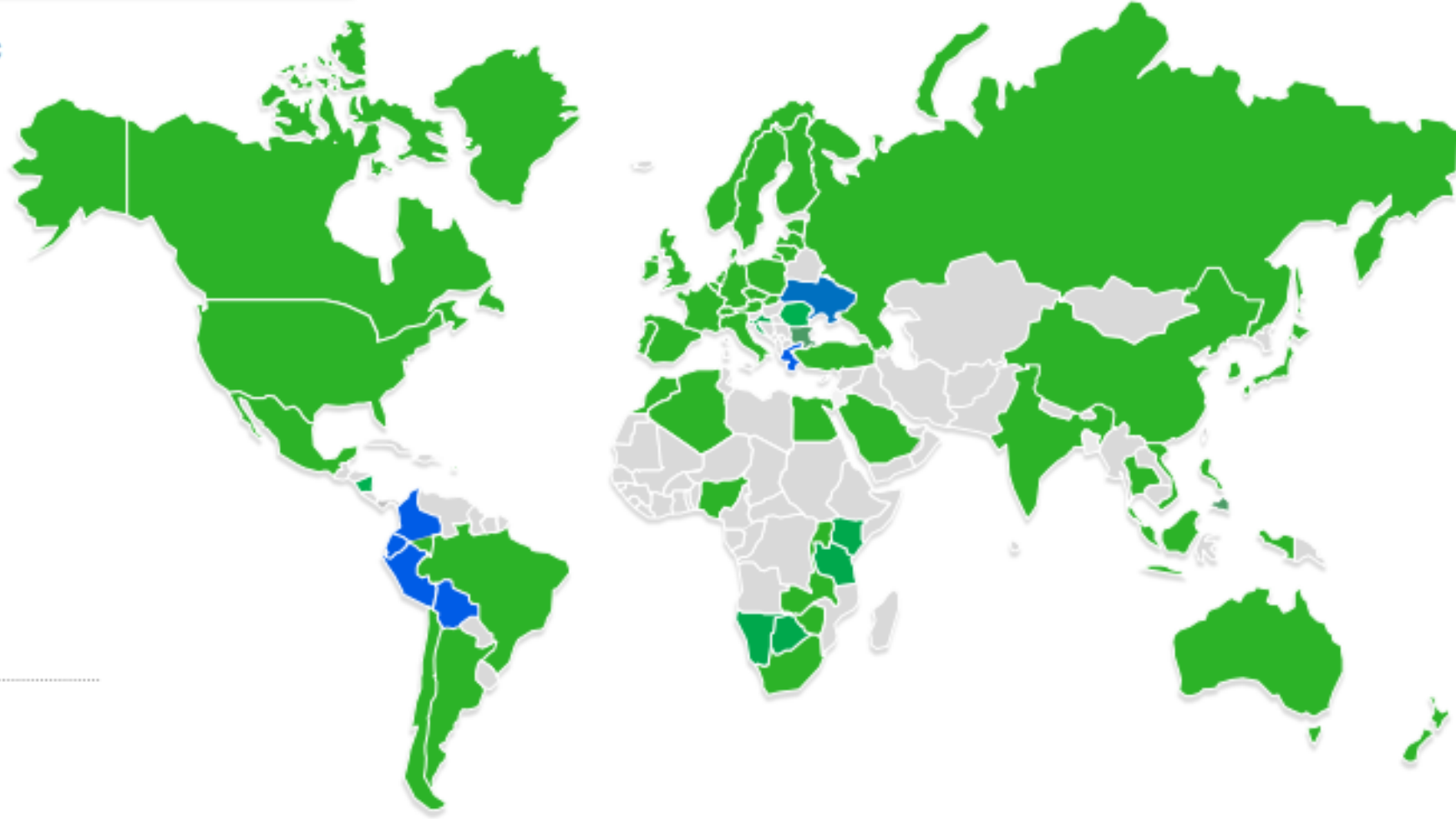
- Sweden
- Switzerland*
- Ukraine
- United Kingdom

Africa

- Algeria
- Botswana
- Egypt
- Kenya
- Namibia
- Nigeria
- Morocco
- South Africa
- Tanzania
- Zambia
- Zimbabwe

Asia / Pacific

- Australia
- China
- Hong Kong
- India
- Indonesia
- Japan
- Malaysia
- New Zealand
- Philippines
- Singapore
- South Korea
- Taiwan
- Vietnam
- Thailand



Middle East

- Israel
- Qatar
- Saudi Arabia
- Turkey
- United Arab Emirates



* Not localized for Equipment

Languages

- Arabic
- Bulgarian
- Chinese - Simplified
- Chinese - Traditional
- Czech
- Croatian
- Danish
- Dutch
- English
- Estonian
- Finnish
- French
- German
- Greek
- Hebrew
- Hungarian
- Italian
- Japanese
- Korean
- Latvian
- Lithuanian
- Norwegian
- Polish
- Portuguese
- Romanian
- Russian
- Serbian
- Slovene
- Spanish
- Swedish
- Thai
- Turkish
- Ukraine
- Vietnamese



Magic Quadrant for Cloud ERP for Product-Centric Enterprises

Published 24 August 2021 - ID G00733937 - 36 min read

By Tim Faith, Denis Torii, **and 3 more**

The ERP for product-centric enterprises market is accelerating its transition to cloud deployment models. ERP application leaders should use this Magic Quadrant to evaluate cloud ERP application suites as part of a composable ERP strategy.

Strategic Planning Assumptions

By 2023, organizations that have successfully renovated their ERP platforms will achieve at least a 40% improvement in IT agility to deliver business outcomes.

By 2023, 60% of product-centric enterprises will utilize standardized ERP capabilities on a composable ERP platform.

By 2024, 60% of enterprise SaaS applications will be composed from packaged business capabilities that provide data, analytical insight and operational application services.

Market Definition/Description

Gartner defines the market for cloud enterprise resource planning (ERP) for product-centric enterprises as a market for application technology that supports the automation of operational and financial activities for the manufacturing, distribution, delivery and servicing of goods. Gartner considers ERP to be a foundational technology for operating enterprises. Cloud ERP is offered via a cloud service application deployment (see Note 1). A full list of attributes for our definition of a "cloud service" appears in the Inclusion and Exclusion Criteria section.



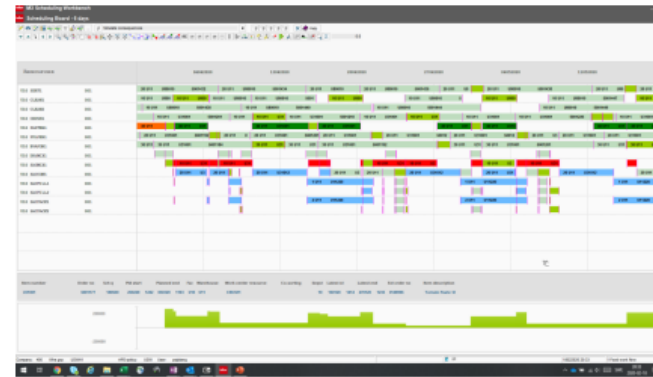
HIGHLIGHT

Advanced Planning Products M3 Scheduling Workbench Multi-Tenant

M3 SWB available as a Multi-Tenant Product

- Cloud 3.0 Secure
- Shared Infrastructure and Database technologies
- Auto Deployment and Scalability
- Single Sign On & Single Sign off through Web Connection

The deployment uses Amazon's AppStream Technology for the User access – so no VPN nor VPC required.



COHERENT SOLUTION

Allow functionality within a multi-tenant environment, in a browser with SSO

EASY ADMINISTRATION

Centrally controlled and deployed code for easy administration

UPGRADE

Allow easy move from On Premise or Single Tenant to Multi-Tenant

R&D

Advanced Planning Products M3 Demand Planner Multi-Tenant

Develop M3 DMP to be a Multi-Tenant Product

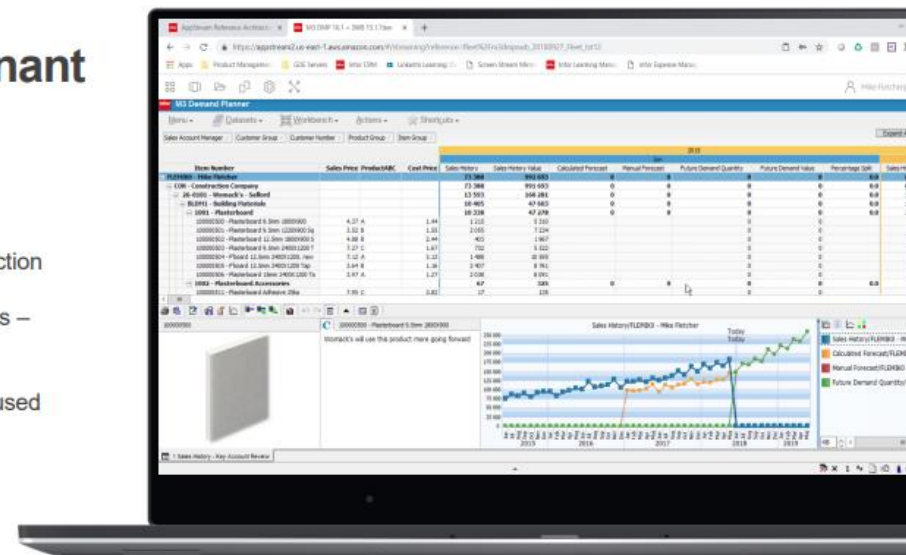
- Cloud 3.0 Secure
- Shared Infrastructure and Database technologies
- Auto Deployment and Scalability
- Single Sign On & Single Sign off through Web Connection

Will use Amazon's AppStream Technology for the User access – so no VPN needed

Docker Technology for auto-scaling; same technology being used by *PLM for Fashion*

Value

- Allow functionality within a multi-tenant environment
- Centrally controlled and deployed code for easy administration
- Allow move from On Premise or Single Tenant to Multi-Tenant; to remove Administration effort to keep up to date.



M3 Planning Workbench and Scheduling Workbench using AWS AppStream – Invitation to Knowledge Transfer Sessions



September 2021

We would like to invite you to the upcoming live and pre-recorded training session targeting M3 PWB and M3 SWB using AWS AppStream as deployment method

Additional questions? Please reach out to [Patrik Sjöberg](#), Product Management.

Thank you,

Sofia Stenbakken

In this edition

[Schedule & links](#)

[Launch Plan](#)

Support for Electronic Signature in IDM

Document Type

+ New Document Type | Back to Documents

Save Changes | Copy | Delete

General | Attributes | ACL | Related Documents | ACL Rules

Display name: Template

Enable owners

Enable Document Signature

Text searchable

- CRM_Zips
- CS_Finance
- CS_Invoices
- CS_Operations
- CS_Orders
- Customer Order
- Document
- EAM
- Employee Document
- Employee Document Generic
- Employee Document No Template
- EQM Document
- File**
- IA_Documents
- Image
- InforGRC_Email_Templates
- InforGRC_Report_Templates
- InforGRC_Reports


Document Management

Search Document Management

My Documents | No name x

Save | Check Out | **Signature** | Download | Save as new document | Start workflow

uh550e-specification-sheet-english.pdf (629.64 KB)



SANDVIK
UH550E MOBILE UNIT
PIONEERING SOLUTIONS
FOR YOU

Technical Specification

The Sandvik UH550E is a pioneering track-mounted and product crushing and screening unit, which has been designed to meet customer demands. The innovative design combines the new CH550 cone crusher with a hammer-style main screen for high capacity accurate screening together with a recirculating conveyor.

This unit is the ideal choice for the production of the highest quality end products, capable of fine or fine end products plus one or more sizes from product both the cone and screen have many alternative settings, custom crushing chambers and screening media, making the UH550E an extremely flexible and useful in many applications even as a secondary and tertiary unit.

KEY BENEFITS

- The complete process is fully automated, with automatic and with a high level of 'intelligence' on board to maximize production, quality of material and minimize downtime.
- Flexible and capable of working as part of a train or as a standalone unit.
- Sandvik CH550 cone crusher, available with a wide range of chambers and settings.
- Fully intelligent ABB system, which monitors and automatically regulates the closed side setting.
- Equipped with Sandvik SSI221M single deck per screen with Sandvik modular screening media fitted as standard or optional Sandvik SSI222M double deck screen and SSI223M feeder including 120° front loader for loading directly from loader.
- Unique loop conveying system providing direct feed to the product screen.
- Highly efficient double deck bar-shaped LP1550 screen with unique Sandvik modular screening media as standard.
- Clean electric drive for powerful, extremely economical and environmentally friendly operation.
- Excellent fuel economy with a Volvo power pack.
- Innovative compact design in operation, transport and back up.
- Full radio remote control fitted as standard.
- Platforms around the crusher screen and power pack provide excellent access for inspections and maintenance.

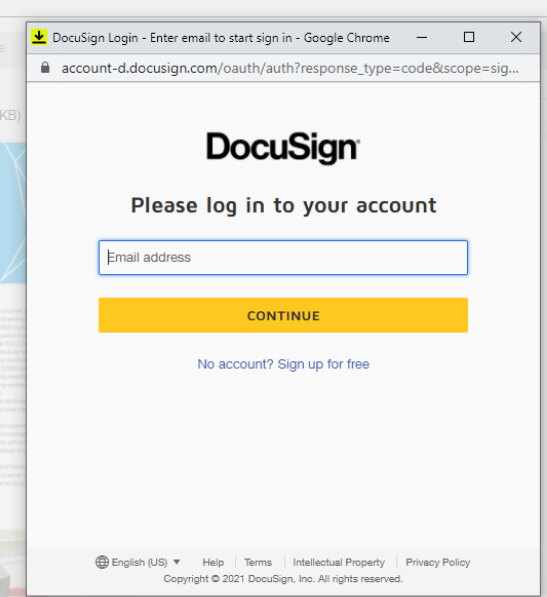
Document Management

Search Document Management

Recently Modified | No name x

Save | Check Out | Signature | Download | Save as new document | Start workflow

uh550e-specification-sheet-english.pdf (629.64 KB)



DocuSign Login - Enter email to start sign in - Google Chrome

account-d.docuSign.com/oauth/auth?response_type=code&scope=sig...

DocuSign

Please log in to your account

Email address

CONTINUE

No account? Sign up for free

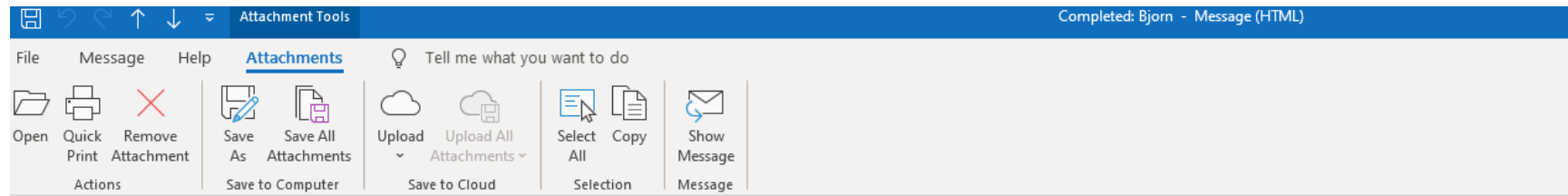
English (US) | Help | Terms | Intellectual Property | Privacy Policy

Copyright © 2021 DocuSign, Inc. All rights reserved.

Document Output Status



Support for Electronic Signature in IDM



Completed: Bjorn

DocuSign Demo System <dse_demo@docusign.net>
To: Bjorn Torold

If there are problems with how this message is displayed, click here to view it in a web browser.

inforos_2021-09_whats_new_september2021_update_en-us.pdf
201 KB

Sent by an external sender

DocuSign Envelope ID: 2352F8A3-970F-47D3-9758-01BFC445AB1E

DEMONSTRATION DOCUMENT ONLY
PROVIDED BY DOCUSIGN ONLINE SIGNING SERVICE
999 3rd Ave, Suite 1700 • Seattle • Washington 98104 • (206) 219-0200
www.docusign.com

infor What's New
Infor OS
September 2021 Production Update

DocuSigned by:
Bjorn
58C4605A63FE40B...

This update has enhancements to ION, Infor Coleman Digital Assistant, and Infor Document Management.

ION

Merge feature
The Merge feature is now available in the Essentials license tier.

Process widgets
The **About** dialog of the Process widgets now shows the Infor OS build number and the widget build number. The format is <Infor OS build number>.<widget build number>, such as 2021.09.385.

Metadata Crawler filters
The Metadata Crawler now provides a way to filter out tables and views that already have metadata stored in the Data Catalog.

Metadata Crawler Find and Replace
The new **Find and Replace** option in the Metadata Crawler can be used to update the names of objects to be registered in the Data Catalog.

Data Lake Ingestion API
The bulk ingestion API is used for direct ingestion of data objects sent by the adopter applications into the Data Lake. By using the Data Lake Ingestion API you can send large files and store them directly into Data Lake.

Data Lake source publication date property
A new dl_source_publication_date property stores the date as set by the publisher of the data.

Scripting Model API methods



Application Foundation. Customer specific email service.

Customers can now use their own email server to manage M3 generated emails. This is enabled through enhancements in the M3 system settings. See KB [2206559](#).

← → Infor Documentation Library

Home

M3 Application Foundation

- About this Guide
- System Administration
 - Database Update Manager
 - Define Number Series
 - Define Basic Data for Feature List
 - Enter System Periods and Seasonal ...
 - Create and Change a System Calendar
 - Export Data from System Table CSYT...
 - Feature List
 - Initial Load
 - Manage System Settings**
 - Manage System Diagnostics
 - M3 Data Import
- Job Management
- Security Administration
- System Maintenance Run
- Accessing Information in M3
- Output Management
- Ad Hoc Reporting
- Display Management
- Event Handling
- Enabling Application Messages
- Transaction Archiving
- Time zone
- Customer Defined Fields

M3 Application Foundation

Home / System Administration

(MNS090/E)	Comp for appmsg	Indicates the company used for application messages created without any relation to a company.
(MNS090/E)	Output service user	Defines the service user for output management. It is used by autojob (MNS950) for resending output and updating job status.
(MNS090/E)	Date of migration	The date is display-only and can only be updated through API transactions. To set the date, MNS100MI, transaction SetMigrateDate has been created which sets the date per division. When set in a division, it is copied as the overall date of migration in (MNS090) if nothing is set.
(MNS090/E)	Tenant activation date	This date indicates the date when the tenant was provisioned. This is a display-only field.
(MNS090/E)	Max rows in search result	Defines how many rows Infor Enterprise Search should return to M3 Business Engine (before any filtering in the function).
(MNS090/E)	Max rows shown from search result	Defines how many search rows that should be displayed in M3 BE.
(MNS090/E)	Email IP address	Indicates the email server address.
(MNS090/E)	SMTP server port	Indicates the SMTP server port
(MNS090/E)	Cryptographic protocol	Indicates the security protocol to use when communicating with the email server. Alternatives: <ul style="list-style-type: none">No encryption: blank protocolSSL-Secure socket layer: SSL protocol usedTLS-Transport layer security: TLS protocol used
(MNS090/E)	User	Indicates a user identity in an external system.
(MNS090/E)	Password	Indicates a password for a user in an external system.

(MNS090) shows the 'Date of migration' field which indicates the date when the migration took place. This also exists in (MNS100) when migrating divisions that were done one by one.

[Related topics](#)

What is ION Grid Amazon Controller (GAC)?

Component	Version	Activation Date	Module	Summary	Issue Type	Issue Reference	Externally Re
M3 CIT - Infor ION Grid Amazon Controller	2.0.20201008	2020-11-21		Fix sonarqube issues	Bugfix	GRID-6756	N
M3 CIT - Infor ION Grid Amazon Controller	2.0.20200225	2020-04-18		Update GAC to support jackson2	Enhancement	GRID-6059	N
M3 CIT - Infor ION Grid Amazon Controller	2.0.20200224	2020-04-18		Update GAC to support jackson2	Enhancement	GRID-6059	N
M3 CIT - Infor ION Grid Amazon Controller	2.0.20200110	2020-04-18		GAC: List for prioritization of binding start	Enhancement	GRID-5793	N
M3 CIT - Infor ION Grid Amazon Controller	2.0.20191203	2020-04-18		Start _PRD_ bindings first	Enhancement	GRID-5783	N
M3 CIT - Infor ION Grid Amazon Controller	2.0.20191017	2019-12-21		Update logging to better track host scale c	Enhancement	GRID-5505	N
M3 CIT - Infor ION Grid Amazon Controller	2.0.20190828	2019-10-19		Minimal support for launch templates	New Feature	GRID-5220	N
M3 CIT - Infor ION Grid Amazon Controller	2.0.20190528	2019-07-20		Add i3en instance type support for GAC	Enhancement	GRID-5010	N
M3 CIT - Infor ION Grid Amazon Controller	2.0.20190430	2019-06-15		Add t3a instance family support for GAC	Enhancement	GRID-4894	N
M3 CIT - Infor ION Grid Amazon Controller	2.0.20190404	2019-06-15		Add new instance type support for GAC	Enhancement	GRID-4798	N
M3 CIT - Infor ION Grid Amazon Controller	2.0.20190110	2019-02-08		Added support for c5n, m5a, r5a ec2 insta	Enhancement	GRID-4435	N
M3 CIT - Infor ION Grid Amazon Controller	2.0.20190110	2019-02-08		GAC is throwing exception when ASG has	Bugfix	GRID-4324	N
M3 CIT - Infor ION Grid Amazon Controller	2.0.20181018	2018-12-21		Remove lost host cleanup functionality in	Enhancement	GRID-4051	N
M3 CIT - Infor ION Grid Amazon Controller	2.0.20181018	2018-12-21		GAC instance meta data need to be upda	Enhancement	GRID-3993	N
M3 CIT - Infor ION Grid Amazon Controller	2.0.20180823	2018-09-28		Add support for new r5d and z1d instance	Enhancement	GRID-3961	N
M3 CIT - Infor ION Grid Amazon Controller	2.0.20180823	2018-09-28		GAC has the wrong default when checkin	Bugfix	GRID-3957	N
M3 CIT - Infor ION Grid Amazon Controller	2.0.20180628	2018-09-28		Add support for new m5d instance type	Enhancement	GRID-3844	N
M3 CIT - Infor ION Grid Amazon Controller	2.0.20180531	2018-09-07		Add support for new c5d instance types	Enhancement	GRID-3764	N
M3 CIT - Infor ION Grid Amazon Controller	2.0.20180504	2018-08-31		Add copyright to GAC source	New Feature	GRID-3651	N

MEC/IEC Toggle

Infor Cloud Application

Menu M3CE About Enterprise Collaborator Administration

ACTIONS OPTIONS RELATED TOOLS

Product: 1-M3 Business Engine

Version: 16.0.0.20210623160049

Apply

Feature ID	Feature description	Featd	Ins d	Mod	Fea	Fea	Feat act	Fea	Up Sch
2174385	EU eInvoice - Additional information via batch order.	210608	210821	COP	1=No Impact	<input checked="" type="checkbox"/>	210821	50	
2180370	API for updating leasing conditions and rental charges in EQM	210621	210821	EQM	1=No Impact	<input checked="" type="checkbox"/>	210821	50	

Infor Cloud Application

- Business Engine Data Management
- Business Engine Field Audit Trail
- Business Engine Field Audit Trail
- Business Engine Files
- Business Engine Files
- Business Engine Interactive Program Services
- Business Engine Interactive Program Services
- Business Engine Jobs
- Business Engine Jobs
- Business Engine Logs
- Business Engine Logs
- Cloud File Transfer Agent Administration
- Data Lake Publisher
- Enterprise Collaborator Administration**

M3CE About

Feature Toggle List

Feature Toggle List

Messages Server Communication Events Utilities Settings About

Encryption/Decryption Date Format Setting Feature Toggle Setting

Feature Name	Feature Description
feature.resource.monitor.cpu.terminate	Determines if a message is automatically terminated if it exceeds the fatal CPU usage
feature.resource.monitor.heap.terminate	Determines if a message is automatically terminated if it exceeds the fatal heap usage

KB 2204299

Monitoring and Auto-termination of Problematic Maps

Attachments (0) | Linked KBs (0) | Linked Incidents (1) | Linked Defects (0) | Sign Up | Add to Favorites

Description:

One of the main problems with the Infor Enterprise Collaborator (IEC) server, is that mappings can over utilize available server resources and cause problems for other mappings, which can impact business operations. These issues manifest itself usually, through slow response times of IEC server and UI and, unexpected failures in message processing. The IEC server currently has an existing 1 hour limit for message processing.

In the August 2021 release, Infor Enterprise Collaborator (IEC) server will start monitoring each individual message processing for heap and CPU consumption. The monitor feature is enabled by default and, will not impact any business processing. The monitor will routinely check and log warnings in the message event logs, if a message goes beyond predefined limits, which are described below.

The thresholds for CPU are based on CPU consumption of individual messages, on the IEC node servicing the request. A warning log will be provided when a message uses at least 50% of total CPU bandwidth. Another log message will be provided when a message uses 65% of total CPU bandwidth and this will be a candidate for termination.

The thresholds for heap are based on available heap for the IEC node. A warning log will be provided when a message consumes at least 3% of the total heap. Another warning log will be provided when the message consumes 10% of the total heap and this will be a candidate for termination.

There is also an optional feature toggle where you can enable the auto termination feature. This toggle is disabled by default. It is however recommended to enable this in development or test environments so you can assess possible impact of this feature coming in October. The feature toggle can be found in Enterprise Collaborator Administration -> Settings -> Feature Toggle Setting. There are 2 toggles; 1 each for CPU and Heap.

In the October 2021 release, IEC server will enable the auto termination by default for non production environments. Messages that go beyond the limits described above will be terminated. The optional feature toggle will continue to be available to enable or disable this auto termination feature.

Also in the October 2021 release, there will be an alert in the IEC Administration pages when a message is detected to use high heap or CPU. The user can search these messages with a provided For Review filter.

In the April 2022 release, IEC server will activate auto termination for all tenants if not yet enabled by then.

If you have concerns, please feel free to reach out to Support.



R&D

Extensibility

XtendM3

Modify and extend M3 business engine logic




- Write customer specific logic
- Based on Groovy, a Java based language
- Executed by *Exit Points* in M3 programs
- Portable between tenants/environments

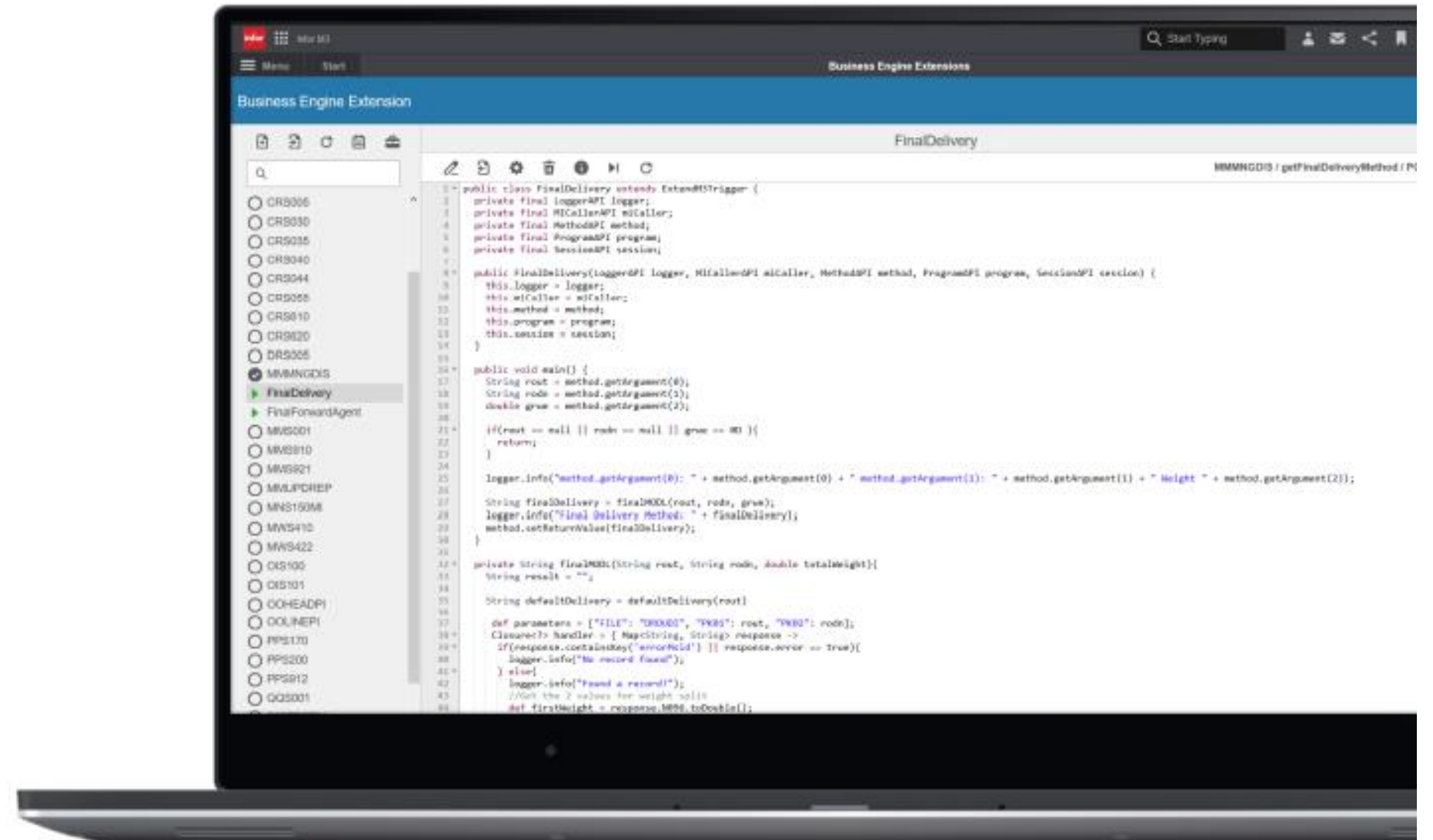
Recently added custom tables, custom APIs etc.

ICS and partners certified – Approval process for deploying in PROD

EXPANDING

Expanding M3 Solution

 Database <ul style="list-style-type: none">• Custom tables aka DynamicDB<ul style="list-style-type: none">• Custom column names/length/type• Custom keys/indexes• Suitable for Transactional & Master	 M3 API <ul style="list-style-type: none">• XtendM3 APIs aka EXTxxxMI<ul style="list-style-type: none">• Custom APIs• Custom Transactions	 Interactive <ul style="list-style-type: none">• Custom Interactive Programs<ul style="list-style-type: none">• XtendM3 API• UI Mark II / H5 SDK
---	---	--



Nordic Customers - M3 CloudSuite (MT)

NEFAB

SPERSEN

POLTTIMO

Elektroskandia

KIVIKS
MUSTERI

Ecophon
SAINT-GOBAIN

NORSK
KYLING

Cloetta

PROHOUSING

JÄRNA

Saarioinen

BRUNVOLL

BioMar

MØLLERENS
SIDEN 1866

SANDVIK

Diab

E.A. Smith

INSULA

NORLEDA
The greatest travel experiences

DC
DELLNER

STOKKE

Ingemarsson
GA LINDBERG
ChemTech AB

etac

MOWI

Q-LINEA

ALTUS
Intervention

VEDUM

Tican

Lantmännen
Agro

Lantmännen
Cerealía

W
Wilhelmsen

TOPRO

Lantmännen
Maskin

Dagens ämnen

Inledning

Senaste nytt från fältet angående M3 Cloud

API Tools & MRP

DataLake and Streaming – Direktrapport från projektet

Lärdomar från Cloud Projekt – Henrik Holmberg

Admin Homepage

What's New

Announcements

ION API Performance

ION API Traffic

ION API Errors

Purchase Requisition

Profile Inform...

FnF
407 M3 13.2 FNF-ION integratio...
AAA Config (407/AAA)
10.2.1.0.16
BE 15.1.3 MCP1-1513-05

Event driven Statistics

Customer & Partner Tables

New List Panel Standard

1300+ Bookmarks

infor TORBJOO [logout] Grid EMD-Grid
Infor ION Grid 11.1.13.0.40 Server time Mon Jun 01 10:05:00 CEST 2015

SOFTWARE UPDATE

My Daily Work - CC

My Menu

- My Purchase Orders
- Stopped Sales Orders
- Preliminary Customers
- Stopped EDI Orders
- Customer master
- Item Master
- MI Test

Sales Monitors

- Preliminary Customers (6)
- Stopped Sales Orders (3)
- Orders over \$750 (7)
- Delayed Sales Orders (10)
- Sales Orders Rolling 7 Days (10)

Workflow Activity Locator

Select a Task or ION Notification in the Tasks Widget to view the content here

redhat LINUX stgreSQL

Hot from the press

API toolbox performance

Toolbox API's

Design you own output API's. Note primary source for retrieving M3 data is always Data Lake unless true real time is needed

- EXPORTMI
- MDBREADMI (/Function MRS010)
- CMS100MI (Function CMS010/015)

Performance relation

The API's has the following relation in performance (same filters and output)

- EXPORTMI = 1
- MDBREADMI = 1.1 (from September update)
- CMS100MI = 2 (from September update)

The more advanced capabilities of CMS100MI has a cost in performance even though not used

Name	Text	Sts	Transaction ID	Description	Status	Table	Info brows cat
Lst							
LstCMFSE40001	Keys: DIVI JBNO JBDM TDIV TRNO	20	LstBOMSummary	Summarized BOM	20-Released	MPDSUM	MPDSUM3
LstMITPLO0001	Keys: WHLO ITNO	20	LstCOLINECHG	List CO Line Charge	20-Released	OO LICH	CO_OO LICH
LstMITPLO2001	Keys: WHLO ITNO	20	LstCoCo	List CO	20-Released	OOHEAD	GDIS_CO_OOHEAD
LstMITPLO20S	Keys: SQRY	20	LstCoCoLn	List CO lines	20-Released	OO LINE	GDIS_CO_OO LINE
LstOCUSMA00	Keys: SQRY	10	LstCoCoLnBylvno	List CO lines by invoice	20-Released	ODLINE	GDIS_CO_ODLINE

Hot from the press

API toolbox performance

To think about from performance perspective

EXPORTMI:

- Use filters that is part of the database index (today always the primary index 00)
- Minimize the number of retrieved columns. Never use * instead of listing fields

MDBREADMI (/Function MRS010)

- Minimize the number of retrieved columns.
- Function search to be used for filtering outside indexes. Note max number of records with search is = 1000 and there is a latency until search is updated by changes

CMS100MI (Function CMS010/015)

- Minimize the number of retrieved columns
- Only use filters according to the used index
- Each added related table doubles the time (from original time)
- Date conversions and advance virtual fields drastically reduces performance. Basic virtual fields has no measurable affect
- Function search can drastically improve performance if filters outside index is needed (see above for note on function search)



Hot from the press

MRP

Enabled two MRP calculation modes

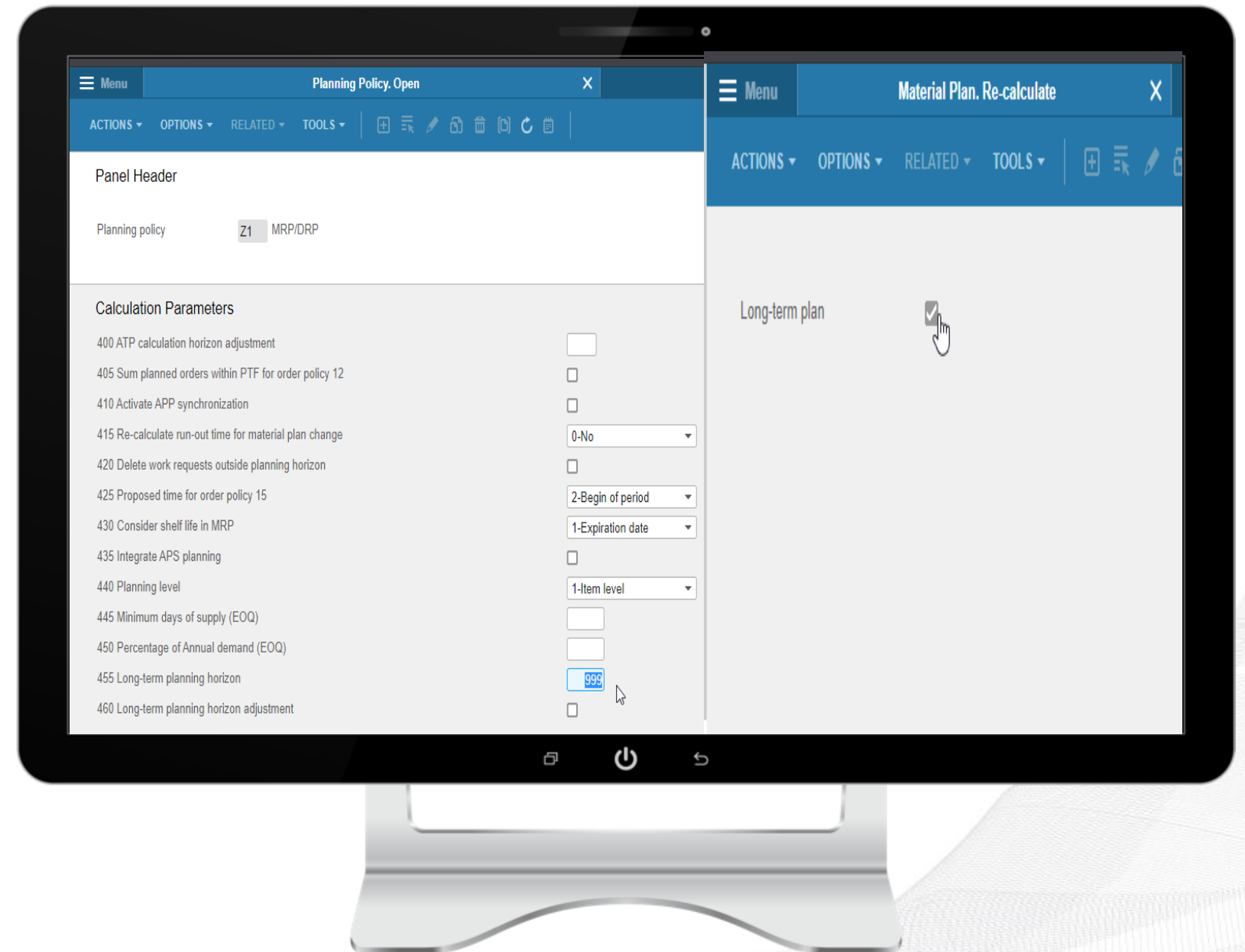
- Normal planning horizon = Accumulated lead time
- Long term Planning = Special MRP run like each weekend/month

Advantage

- Daily (or hourly) planning do not need to plan outside accumulated lead time
- Often massively improved performance in daily plan

Activate

- Use function 'Planning Time Fence & Horizon. Calculate' (MMS355) to re-calculate planning horizon
- Create 2 MRP run schedules. One with normal horizon and a weekly/monthly with long term planning



MRP Best practice [KB 2033035](#) has been updated with various changes

Dagens ämnen

Inledning

Senaste nytt från fältet angående M3 Cloud

API Tools & MRP

DataLake and Streaming – Direktrapport från projektet

Lärdomar från Cloud Projekt – Henrik Holmberg

Admin Homepage

What's New

Announcements

ION API Performance

ION API Traffic

ION API Errors

Purchase Requisition

Profile Inform...

FnF
407 M3 13.2 FNF-ION integratio...
AAA Config (407/AAA)
10.2.1.0.16
BE 15.1.3 MCP1-1513-05

Event driven Statistics

Customer & Partner Tables

New List Panel Standard

1300+ Bookmarks

infor TORBJOO [logout] Grid EMD-Grid
Infor ION Grid 11.1.13.0.40 Server time Mon Jun 01 10:05:00 CEST 2015

SOFTWARE UPDATE

My Daily Work - CC

My Menu

- My Purchase Orders
- Stopped Sales Orders
- Preliminary Customers
- Stopped EDI Orders
- Customer master
- Item Master
- MI Test

Sales Monitors

- Preliminary Customers (6)
- Stopped Sales Orders (3)
- Orders over \$750 (7)
- Delayed Sales Orders (10)
- Sales Orders Rolling 7 Days (10)

Workflow Activity Locator

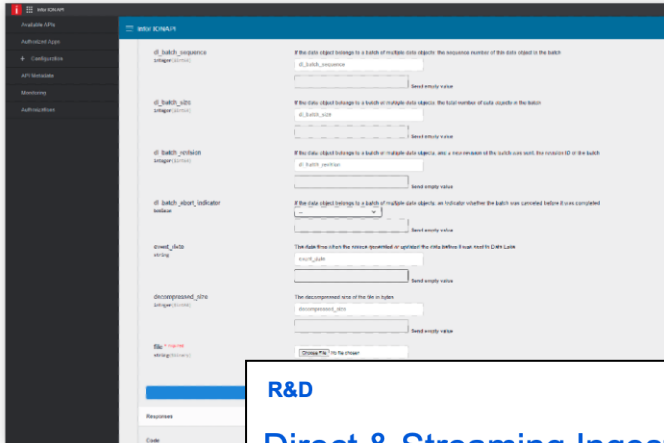
Select a Task or ION Notification in the Tasks Widget to view the content here

redhat LINUX stgreSQL

HT 2021 Expectations

R&D

Direct & Streaming Ingestion Ingestion Pipelines



Expanded data ingestion options provide for direct writing of content to Data Lake for bulk load, large payload operations as well as real-time data streaming for downstream real-time services

Phase 1: Bulk ingestion APIs (2021-09)
Phase 2: Real-time streaming ingestion (2H'21)

Value

- Direct ingestion (vs. Infor ION)
- Expanded file size support limits
- Real-time stream processing
- 1st 1/2 of Data Fabric's **Operational Data** strategy

INFOR DATA FABRIC - Roadmap Release | May 2021

ROADMAP - July 2021

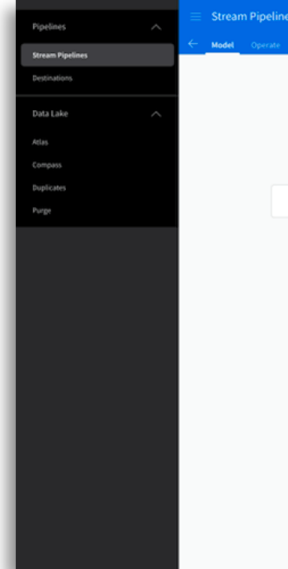
Infor OS

As a collection of related and interdependent components, Infor OS priorities directly benefit the other components and focus the strategy of being the leader in the enterprise application technology domain. The focus is on the collective benefits to deliver speed and agility with downstream innovation.

Now	Next 6 Months	Vision
<p>Enterprise UX</p> <ul style="list-style-type: none"> • Electronic Signatures (available for adoption) • IDM Bulk Import Utility Updates <p>Intelligent Digital Assistance (Coleman DA)</p> <ul style="list-style-type: none"> • Enabling Lex V2 Enhanced Model <p>Enterprise Application Integration</p> <ul style="list-style-type: none"> • Hybrid Service: PATCH/DELETE Methods • Custom SMTP • IMS Cookbook • File append line separator • Assigned to me badge • New "All" Message filter <p>Data Fabric</p>	<p>Enterprise UX</p> <ul style="list-style-type: none"> • Federated Search • Private branded mobile app • IDM Private Spaces • Document Capture MT <p>Intelligent Digital Assistance (Coleman DA)</p> <ul style="list-style-type: none"> • Coleman Microsoft Teams Integration <p>Applied ML (Coleman AI PAAS)</p> <ul style="list-style-type: none"> • ML Real-Time Decision Engine • ML Menu (see ML roadmap) • Neural Net Addition to ML Library <p>Organizational Compliance</p> <ul style="list-style-type: none"> • 3rd Party GRC Integrations • Certification Manager Enhancements <p>Enterprise Application Integration</p> <ul style="list-style-type: none"> • System Health Service (ION) • Large Message Capabilities • IRIS FIP140-2 Encryption Support • External user support • Tenant level policy • Farm level APIs • API Flow - Terminate, Join, Looping <p>Data Fabric</p> <ul style="list-style-type: none"> • Hybrid service - Mutual SSL/ OAuth • Bulk Data Loader • Large Message Splitter • Compass Performance Improvements • Compass Views • Saved Queries & History • Ingestion Pipelines • Compass API Pagination • Data reconciliation tooling 	<p>Enterprise UX</p> <ul style="list-style-type: none"> • HCM/IDM integration • Multi-value Attributes • Custom BODs per Doc Type (IDM) • Mobile homepage welcome experience • External Users • Enterprise UX refresh <p>Intelligent Digital Assistance (Coleman DA)</p> <ul style="list-style-type: none"> • Contextual Awareness (DA) • Standard Skills Provisioning • Coleman Vision (Reko) <p>Applied ML (Coleman AI PAAS)</p> <ul style="list-style-type: none"> • Incremental Learning (ML) • Explainable AI; Correlation Analysis <p>Enterprise Application Integration</p> <ul style="list-style-type: none"> • Backend As a Service • API Marketplace • Developer Portal • Graph QL Proxy Support for REST APIs <p>Data Fabric</p> <ul style="list-style-type: none"> • Data Fabric ETL & Streaming Pipelines • Industry 4.0 IoT integrations • Data Federation with Network Tenancy <p>Organizational Compliance</p> <ul style="list-style-type: none"> • Additional GRC Compliance (ex. HIPPA)

R&D

Direct & Streaming Ingestion Pipelines



Real-time, streaming data processing and delivery into Cloud-based relational data systems & streaming technologies to support operational data access and reporting.

Phase 1: AWS Aurora (1Q'22)
Phase 2:

- Expanded SaaS data warehouses (1H'22)
- Streaming SQL (1H'22)

Phase 3: On-premises support (2H'22)

Value

- 2nd 1/2 of Data Fabric's **Operational Data** strategy
- Real-time data replication into Cloud data warehouses
- End-to-end managed data lifecycle
- Real-time processing for downstream Infor consumers

Dagens ämnen

Inledning

Senaste nytt från fältet angående M3 Cloud

API Tools & MRP

DataLake and Streaming – Direktrapport från projektet

[Lärdomar från Cloud Projekt – Henrik Holmberg](#)



Admin Homepage

What's New

December 2015

Infor M3 CE

ION

Coleman AI Platform

CloudSuite WMS

M3 CE

Rhythm for Commerce

Announcements

1 Announcement

ION API Performance

ION API Traffic

ION API Errors

Purchase Requisition

Event driven Statistics

Customer & Partner Tables

New List Panel Standard

1300+ Bookmarks

Profile Inform...

FnF
407 M3 13.2 FNF-ION integratio...
AAA Config (407/AAA)
10.2.1.0.16
BE 15.1.3 MCP1-1513-05

infor TORBJOO [logout] Grid EMD-Grid
Infor ION Grid 11.1.13.0.40 Server time Mon Jun 01 10:05:00 CEST 2015

SOFTWARE UPDATE

My Daily Work - CC

My Menu

- My Purchase Orders
- Stopped Sales Orders
- Preliminary Customers
- Stopped EDI Orders
- Customer master
- Item Master
- MI Test

Sales Monitors

- Preliminary Customers (6)
- Stopped Sales Orders (3)
- Orders over \$750 (7)
- Delayed Sales Orders (10)
- Sales Orders Rolling 7 Days (10)

Workflow Activity Locator

Select a Task or ION Notification in the Tasks Widget to view the content here

redhat LINUX PostgreSQL



Thank you

Infor is a global leader in business cloud software specialised by industry.

Infor.com

