


LN Industry CloudSuites Roadmap

Marina ter Haar
Director Product Management




CLOUDSUITE SOLUTIONS

INDUSTRY SPECIFIC

Copyright © 2025. Infor. All Rights Reserved. infor.com

1


Disclaimer



This presentation reflects the direction Infor may take with regard to the products or services described herein, all of which is subject to change without notice. This presentation is not a commitment to you in any way and you should not rely on any content herein in making any decision.

Infor is not committing to develop or deliver any specified enhancement, upgrade, product, service or functionality, even if such is described herein. Many factors can affect Infor's product development plans and the nature, content and timing of future product releases, all of which remain in the sole discretion of Infor. This presentation, in whole or in part, may not be incorporated into any agreement. Infor expressly disclaims any liability with respect to this presentation.

Capabilities covered in this presentation may require additional licensing, please connect with your Infor Account Executive to learn more.



Copyright © 2025. Infor. All Rights Reserved. infor.com 2

2

1

Discrete Manufacturing Industries

	Industrial Manufacturing	Automotive	Aerospace & Defense	Engineering & Construction
				
Key Challenges	<ul style="list-style-type: none"> • Supply Chain Responsiveness • Workforce & Skills Gap • Productivity & Quality • Customer Lifetime Value • Profitability & Growth 	<ul style="list-style-type: none"> • Market Uncertainty • Financial Pressures • Industry Transformation • Environmental Requirements • Competition for Talent 	<ul style="list-style-type: none"> • Compliance & Security • Supply Chain • Continuous Innovation • Advanced Manufacturing • Profitability & Growth • Quality and Reliability 	<ul style="list-style-type: none"> • Project and cost Management • Digital Transformation • Supply chain agility • Sustainability compliance

Copyright © 2024. Infor. All Rights Reserved. infor.com 3

3

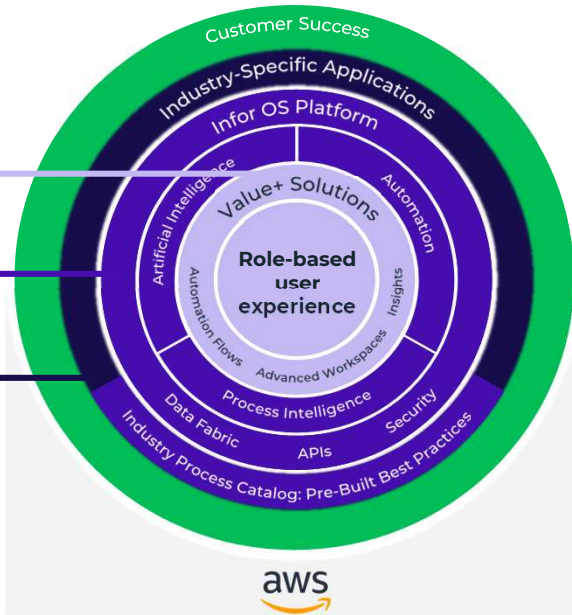
Infor's Product Vision

Infor understands the challenges of manufacturers and the need to leverage technology to provide a competitive edge. Infor innovation and product roadmaps reflect input provided by customers.

Experience-oriented and Hyperproductive Solutions

One Connected Platform for Innovation and Intelligence

Complete Industry-Specific Solutions



4

2

Discrete Enterprise industries (CS IE, CS E&C, CS A&D, CS Auto) Themes for 2025 (H2) and beyond

Improved UX Persona Driven & Modernization	Connectivity Extensions REST API library	Automation Velocity Suite AI, RPA and Mining	Preconfigured Configurations & Localizations	Environmental, Social, Governance ESG regulations
Portals Enterprise collaboration	Supply Chain Advanced Planning & Scheduling	Project E&C Project Rental items & Asset mgt	High volume Assembly based production	Steel & Paper Dimensions



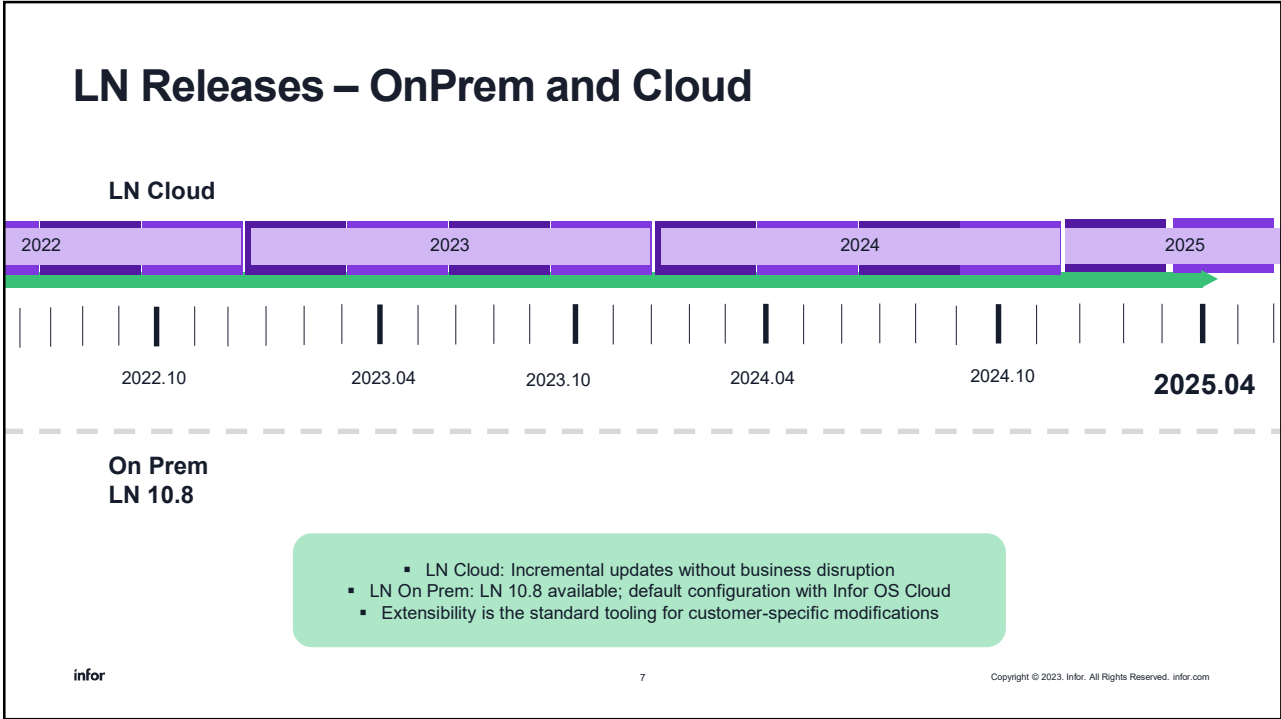
5

LN releases



6

3



7



8

Discrete Enterprise industries (CS IE, CS E&C, CS A&D, CS Auto) Themes for 2025 (H2) and beyond

Improved UX Persona Driven & Modernization	Connectivity Extensions REST API library	Automation Velocity Suite AI, RPA and Mining	Preconfigured Configurations & Localizations	Environmental, Social, Governance ESG regulations
Portals Enterprise collaboration	Supply Chain Advanced Planning & Scheduling	Project E&C Project Rental items & Asset mgt	High volume Assembly based production	Steel & Paper Dimensions

infor Copyright © 2024. Infor. All Rights Reserved. infor.com 9

9

LN Common

C-level Workspaces

infor Copyright © 2025. Infor. All Rights Reserved. infor.com 10

10

5

C-Level Workspaces – Limited Available 2025.04

Not available yet in IGS

C-Level Workspaces (NEW)

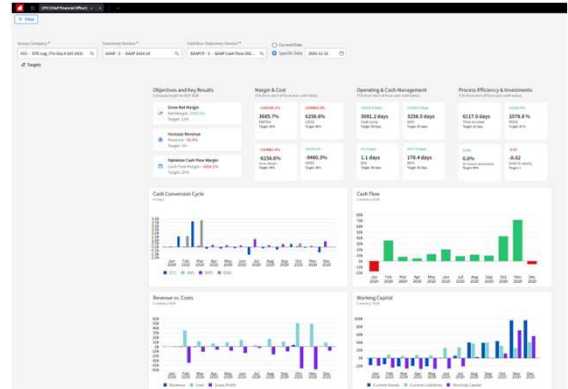
Workspaces for C-Level Executives offering a single view to the performance of the organization against goals and forecasts.

Solution

- Business outcomes
- Key Value Indicators
- Progress-focused KPIs
- Company-specific objectives
- Limited Availability release

Benefits

- Executives can see state of the enterprise on-line
- One-click navigation to process improvements
- Draws attention to high priority Key Value Indicators
- Executives will have a reliable and consistent tool for measuring enterprise performance and where to add value

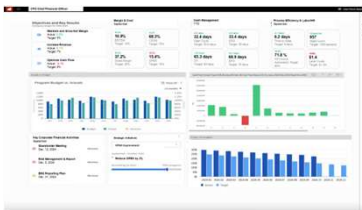


Copyright © 2024, Infor. All Rights Reserved. infor.com 11

C-Level Workspaces to monitor business outcomes (Limited Available 2025.04)

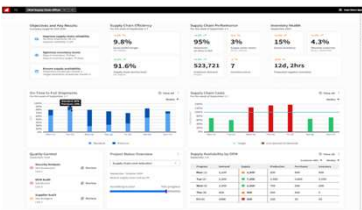
Not available yet in IGS

Chief Financial Officer



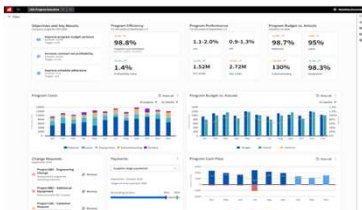
- ✓ Essential financial data
- ✓ Key Value Indicators such as Net Margin, Revenue, and Cash Flow
- ✓ Detailed Key Performance Indicators related to Cost, Cash Management, Process Efficiency, Labor, and more
- ✓ OPEX management summary

Chief Supply Chain Officer



- ✓ Essential supply chain data
- ✓ Give information to make critical supply chain decisions faster and with greater accuracy
- ✓ Identifies Supply Chain issues that may affect customer deliveries and cash flow of the enterprise

Program Executive



- ✓ Single view to program related information
- ✓ Key Value Indicators including program efficiency for budgets versus actuals, contract wins and losses, bookings and backlog

Copyright © 2024, Infor. All Rights Reserved. infor.com 12

- Discrete Enterprise

Persona Driven and UX – roadmap 2025.10 & beyond

C-level Workspaces

- Chief Operating Officer (COO)
- Add insights and intelligence to C-level workspaces and more



13

A dark blue slide with a 3D effect. A dark blue rectangular block is positioned in the center, tilted slightly. The text "LN Common" is in the top left, "Operational Workspaces" is in the center of the block, and the "infor" logo is in the bottom left. A copyright notice is in the bottom right.

LN Common

Operational Workspaces

The Infor logo, consisting of the word "infor" in a lowercase, sans-serif font. The "i" and "n" are red, while the "f", "o", "r", and "a" are black.

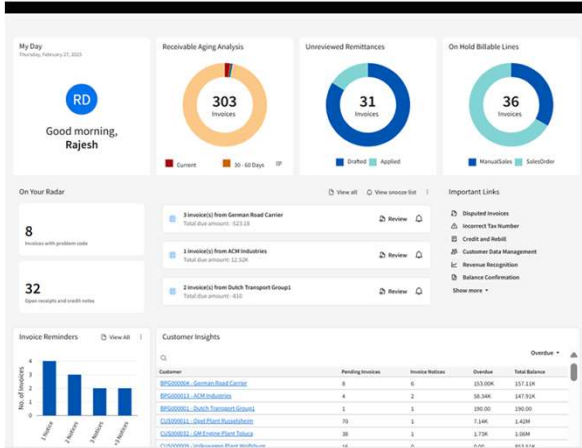
Copyright © 2025, Infor. All Rights Reserved. infor.com 14

14

7

Operational Workspaces

Not yet available in IGS



Persona-driven, Operational Workspaces
 Role-specific workspaces, focused on offering specific personas a high productivity workspace to deliver the role.

Solution

- Role of the user
- User definable
- Exception-based and actionable
- Role-specific KPIs
- Links section

Benefits

- Role-specific workspace available per user as defined in the Industry Process Catalog
- Draws attention to the exceptions the users needs to know
- Outside-in approach for role-tailored workspace that adds out-of-the-box value to the user



Copyright © 2024. Infor. All Rights Reserved. infor.com 15

15

Persona-driven, operational workspaces

Available - October 2024

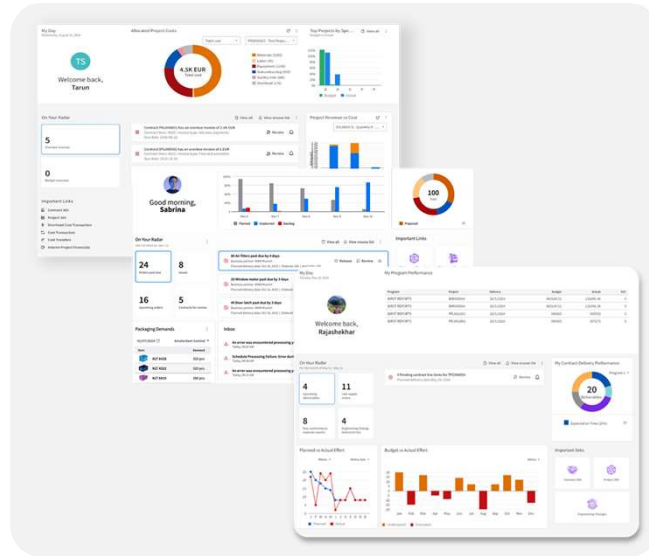
1. Buyer
2. Production Supervisor
3. Program Manager
4. Project Accountant
5. Payables Administrator
6. Automotive Shipping Planner

New – April 2025

1. Receivables Administrator
2. Fixed Asset Administrator

Next up

1. Rental Equipment Dispatcher
 2. PLM requirements manager
- And other



Copyright © 2024. Infor. All Rights Reserved. infor.com 16

16

Workspace – Fixed Assets Administrator

Facilitates the tracking, investments, disposals and recording of assets, offering users key graphics, indicators and reporting options. It also supports the company's compliance with fixed asset accounting standards.

Problem

- Effectively manage (maintenance and replacement of) plant & equipment, buildings, and vehicles, etc.)
- Accurately calculate depreciation and dispose of assets that are outdated and or need to be replaced
- Allow staff to locate equipment quickly and easily in real time



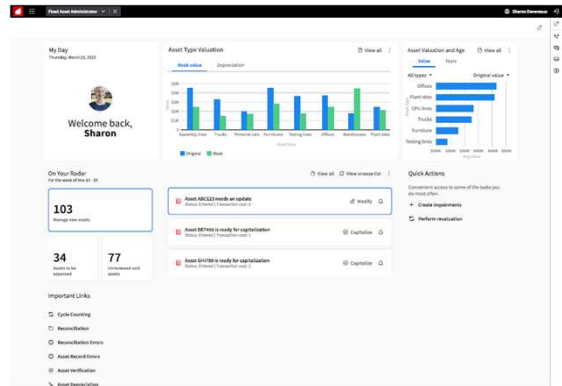
Solution

- Specific Workspaces tailored for the role of the Fixed Assets administrator
- Provides insight into the value of assets by category and the accumulated depreciation
- An 'on your radar' view surfaces issues relating to capitalization, disposal and management of the movements of assets.



Benefits

- Users get all fixed assets related information they need in one place
- One-click navigation to other system functions
- Draws attention to high priority actions
- Users can personalize to their needs



Workspace – Accounts Receivables Administrator

Designed to support healthy cash flow for the company by ensuring customers make payments on time using accurate and efficient invoicing, customer relationship management, and related receivable activities.

Problem

- Application spaces are very transaction oriented
- Workspaces are not always surfacing issues that need addressing



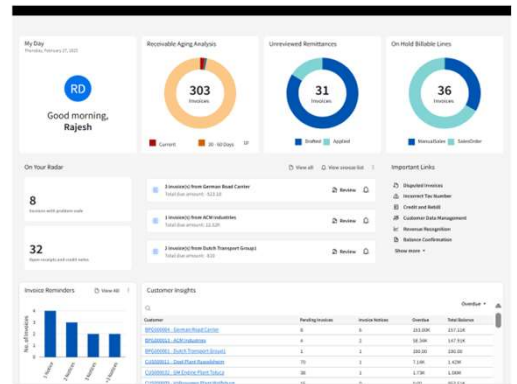
Solution

- Specific Workspaces tailored for the Accounts Receivables administrator
- An 'on your radar' view that surfaces issues when reviewing customer payments and/or the lack thereof.



Benefits

- Provides custom user-defined capabilities to improve usability and productivity
- Easy and actionable insight in the cash inflow, remittance and payment applications to streamline processing and improve customer communication
- Workloads and bottlenecks displayed on a single page, providing greater insight more quickly



- Discrete Enterprise

Persona Driven and UX – roadmap 2025.10 & beyond


C-level Workspaces

- Chief Operating Officer (COO)
- Add insights and intelligence to C-level workspaces

Operational Workspaces

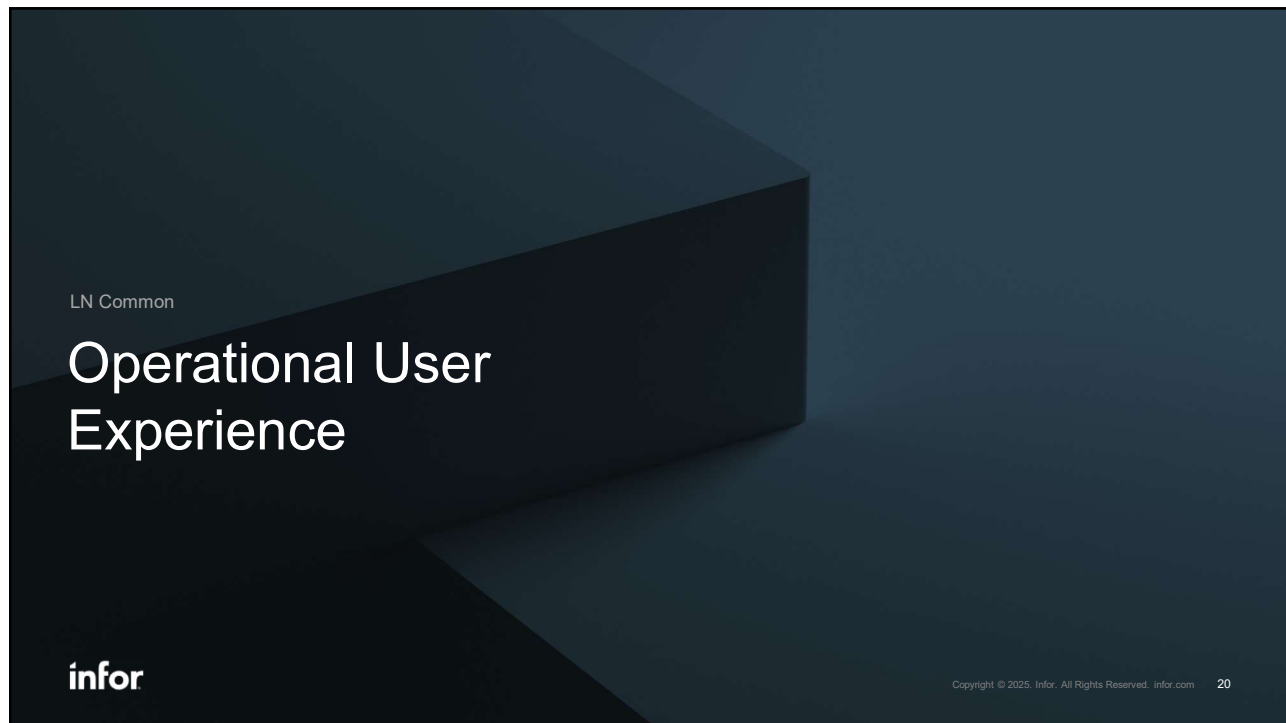
- Equipment rental dispatcher
- PLM requirements manager



	<p>Value proposition:</p> <p>As Rental Equipment Dispatcher I ensure the timely execution of all rental requests and it is my responsibility to achieve outstanding customer satisfaction. Elements of outstanding customer satisfaction are cost-effective rental agreements and well-maintained equipment. I reach cost-effective rental agreements by striving to the highest utilization rate for our internal fleet and by ensuring a healthy portfolio of external equipment suppliers. I oversee all functions to ensure the smooth operation of our rental business, such as planning of rental assets and operators, logistics, maintenance, regulation and compliance, collection of operator timesheets, and customer service. Next to the operational focus, I advise on the longer term strategic plans with regards to plant and equipment, such as detection of trends in the market, pricing strategy, or the investment plan.</p>
<p>Hi, I am Robin, and I am a Rental Equipment Dispatcher</p> 	<p>Core Functions:</p> <p><Describe what this person does to achieve their goals and bring value to the organization. Include who they interact with and what their typical responsibilities look like in practice. This should be generally product-agnostic.></p>
	<p>My core functions are both operational and strategic in nature.</p> <p>Planning</p> <p>At the start of each day, I review the planning and items that need my attention. The daily/weekly/monthly planning is the cornerstone of all the work that needs to happen. Through our inventory tracking system I know where the rental assets reside. I efficiently schedule staff to handle equipment pickups and deliveries, and I am in close contact with the Service Planner regarding maintenance tasks. I review the short term planning and manage unexpected events and day-to-day issues that may occur, such as unplanned breakdowns or</p>

LN Common

Operational User Experience



infor

Copyright © 2025, Infor. All Rights Reserved. infor.com 20

User Experience (UX)

- Formatting**
 - Problem** Enable conditional formatting on dashboard KPI values
 - Solution**
- Insights**
 - Problem** Enable drill down on in-session graphs
 - Solution**
- Visualization**
 - Problem** Support for new chart-type in standard sessions
 - Solution**
- Navigation**
 - Problem** Auto collapse on/off as per template
 - Solution**



21

User Experience – Enable conditional formatting on dashboard KPI values

Requirement

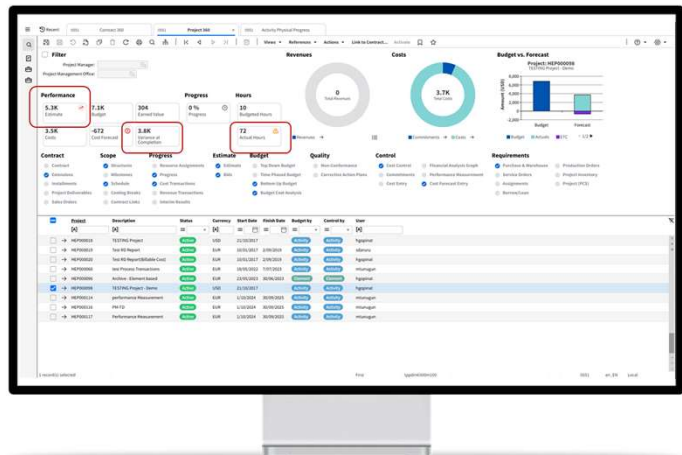
- Value of KPI does not show whether it is positive or negative
- There are no visual queues that can be used against KPIs in the same way as this can be done in a grid through conditional formatting

Solution

- Conditional format available for the KPI values on the session
- A new conditional format type is introduced that will be used as 'KPI Icon' in the dashboard KPI Tile

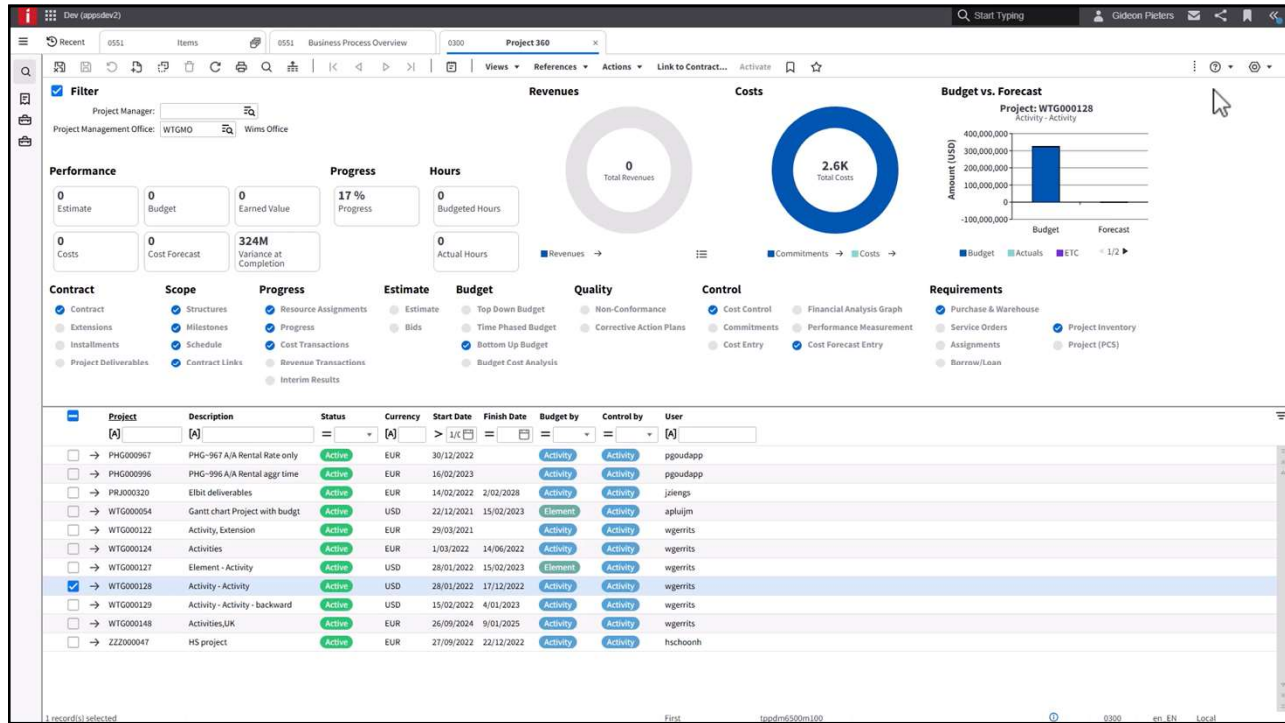
Benefit

- Quickly have insight because of visual indicator
- User configured so can be specific to the company/user
- Same interpretation of value by all users



22

11



23

User Experience – Enable drill down on in-session graphs

Requirement

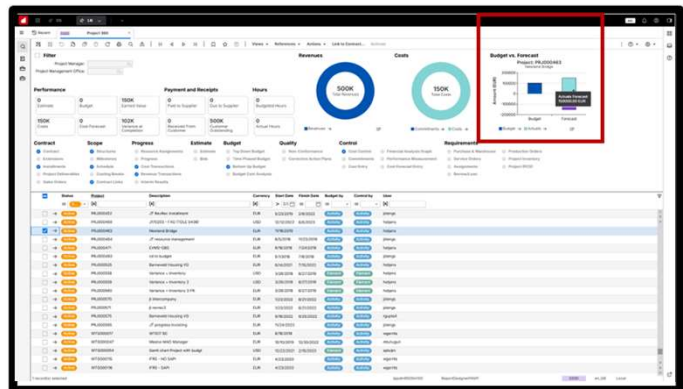
- Changes to the use of graphics and tiles have been evolving over the last 3 release cycles. From Static, to animated (2024.10), the in-session graphs are still static.
- Donuts in session were introduced. The donuts are drill-down capable
- Users would like to interpret information in for the in-session charts/graphs quicker

Solution

- The in-graph sessions are now capable to support drill downs from the graphical indication to an underlying session

Benefit

- Modernized look and feel provides simpler and easier to use screens, providing more clarity, and time savings
- More consistent interpretation of the data in view – means less time to analyze, interpret and associate



24

Copyright © 2025, Infor. All Rights Reserved. infor.com

24



12

LN UX – Support for new chart type in standard sessions

A new chart type applied to planned inventory overview that combines positive and negative values with a resulting curve

Problem

- Grid reading costs time and reduces the ease of consuming information
- Hard to identify inventory bottlenecks quickly



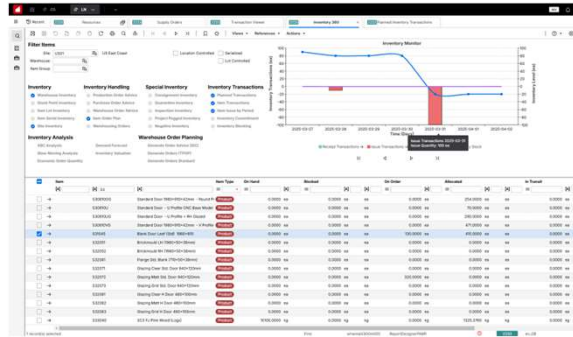
Solution

- Chart that combines multiple data sets in single graph
- Graphical visualization of projected inventory

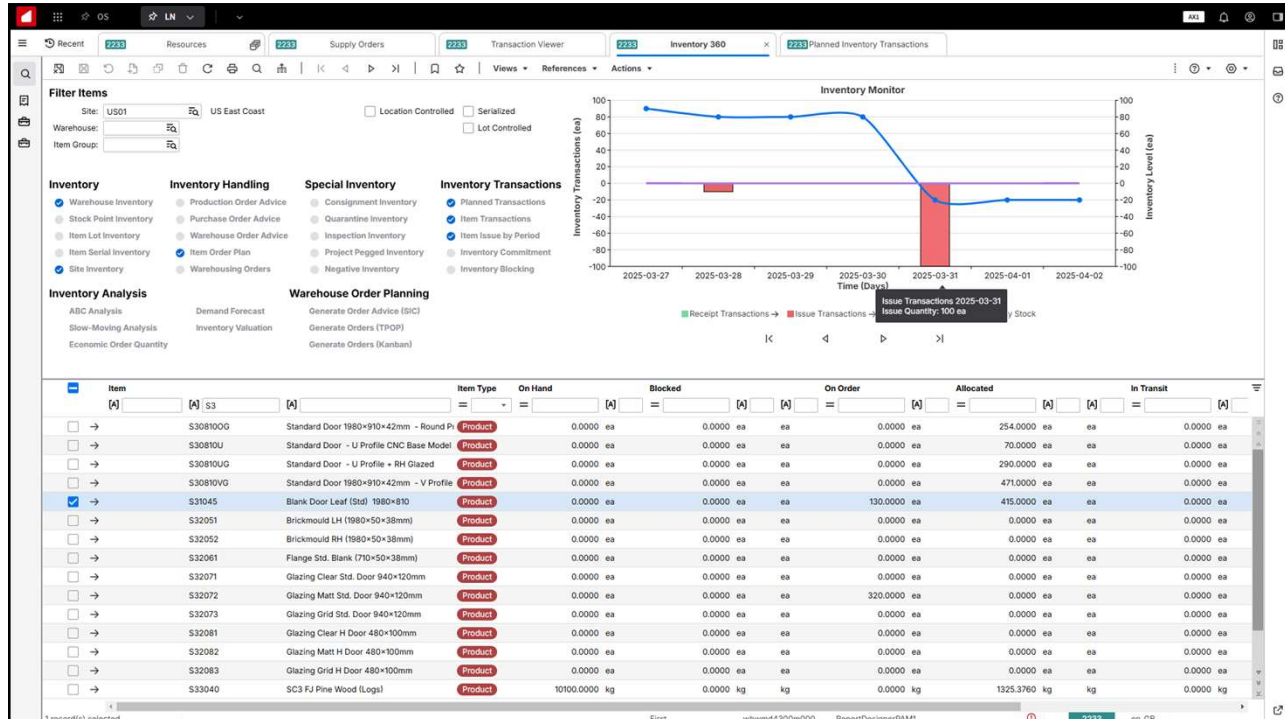


Benefits

- Quickly see whether values are in expected range
- For the planned inventory graph, easy to see whether value turns negative – which is the trigger to action



25



26

- Discrete Enterprise

Persona Driven and UX – roadmap 2025.10 & beyond

C-level Workspaces

- Chief Operating Officer (COO)
- Add insights and intelligence to C-level workspaces

Operational Workspaces

- Equipment rental dispatcher
- PLM requirements manager

Operational LN User Experience

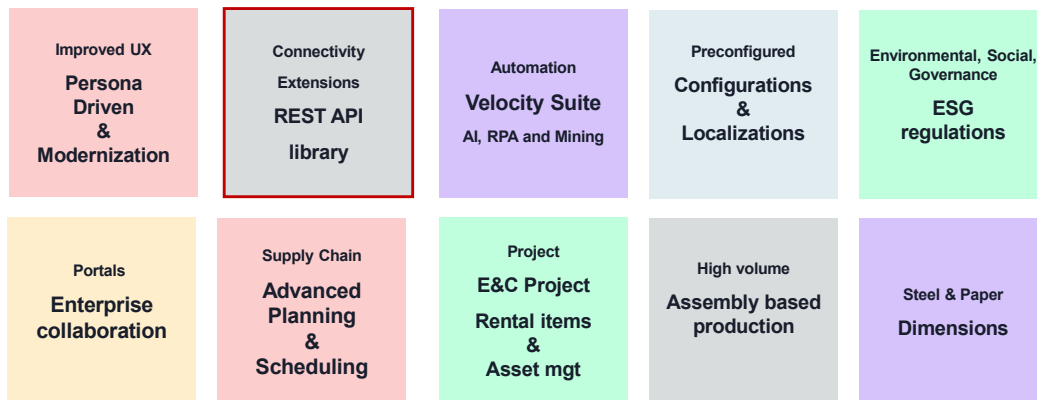
- Improved Maps visualization
- Extended Graphs support
- User Experience - Moveable Session Groups



Copyright © 2025. Infor. All Rights Reserved. infor.com 27

27

Discrete Enterprise industries (CS IE, CS E&C, CS A&D, CS Auto) Themes for 2025 (H2) and beyond



Copyright © 2024. Infor. All Rights Reserved. infor.com 28

28

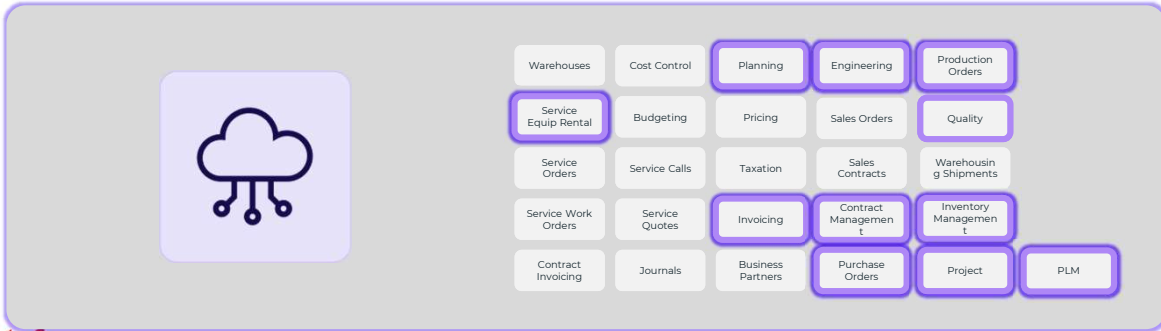
14

Not yet available in IGS

Ongoing investments in LN REST API's library

5600+ API capabilities
More to come...

The standard LN REST API library has been extended with more LN REST APIs to further integrate with Infor OS platform services and to help create additional customer value.



29

Copyright © 2024. Infor. All Rights Reserved. infor.com

29

Extensibility Tools to 'Build Your Own' REST APIs

Customers and partners can add even more value to LN CloudSuites by creating their own LN REST APIs with new tools, including LN REST API Modeler, LN Extension Modeler, LN Studio, and LN Personalization Tools

Problem

- Standard LN REST API library does not meet needs for business functionality and data provided by the LN CloudSuite
- Unable to integrate with 3rd party solutions that rely on REST APIs
- Unable to take advantage of OS services innovation due to missing LN REST API functionality.



Solution

- LN CloudSuites Extensibility Tools available to customers and partners that extend the standard LN REST API library or create their own LN REST APIs

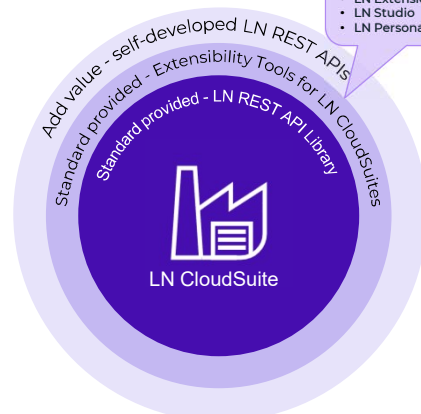


Benefits

- Quickly introduce new business APIs to meet business growth and transformation objectives
- Extend the standard LN REST APIs specific to a company's need, including for Infor OS platform services
- Integrate faster with 3rd party using your own built LN REST APIs



Extensibility Tools for LN CloudSuites:
• LN REST API Modeler
• LN Extension Modeler
• LN Studio
• LN Personalization Tools



Copyright © 2025. Infor. All Rights Reserved. infor.com 30

30

15

Harness the Full Potential of LN REST APIs by Building Your Own



Use the REST API Modeler yourself



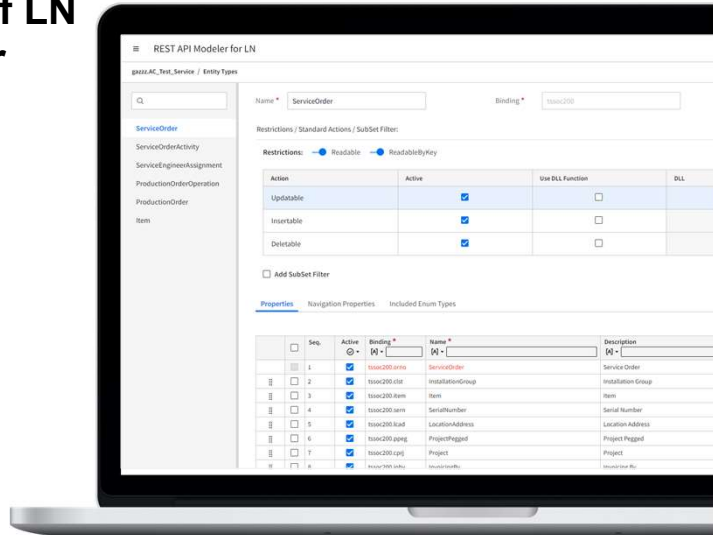
Extend the existing LN REST APIs from the API library



Access to LN business objects



Customer-specific LN REST APIs can be developed



Copyright © 2025. Infor. All Rights Reserved. infor.com 31

31

LN REST API - Roadmap

- Extending Public library of REST API capabilities for cloud solutions
- Improvements to the REST API Modeler
- Enablement program for REST API delivery with curriculums for personas, such as content developers, consultants, product managers and project managers
- Best practice articles and API documentation published to Developer Portal



Copyright © 2025. Infor. All Rights Reserved. infor.com 32

32

16

Discrete Enterprise industries (CS IE, CS E&C, CS A&D, CS Auto) Themes for 2025 (H2) and beyond

Improved UX Persona Driven & Modernization	Connectivity Extensions REST API library	Automation Velocity Suite AI, RPA and Mining	Preconfigured Configurations & Localizations	Environmental, Social, Governance ESG regulations
Portals Enterprise collaboration	Supply Chain Advanced Planning & Scheduling	Project E&C Project Rental items & Asset mgt	High volume Assembly based production	Steel & Paper Dimensions

infor Copyright © 2024. Infor. All Rights Reserved. infor.com 33

33

Infor Velocity Suite

A package of solutions and services that makes process innovation easy and impactful

Value+ Solutions: Pre-configured Industry Use Cases

Process Automations

The Industry Cloud Platform: Advanced Technologies

Process Mining

RPA

AI/ML

GenAI

Services

Deployment

Specific Customer Use Cases

Infor Managed Services

infor Copyright © 2025. Infor. All Rights Reserved. infor.com 34

34

LN Velocity Suite Deliverables

New Value+ Content 2025.04

- Financial Closing Reconciliation
- Invoice Processing
- Sales Contract Fulfilment
- Purchase Order Updates
- Vendor Compliance Checks
- Return Sales Order Automation
- PLM for Discrete Structure Creation
- PLM For Discrete Excel to Import Package
- Automation of Receipts
- Financial Closing Unallocated Receipts

Upcoming Value+ Content Post April

- Project Cost Forecasting
- Vendor Performance Insights
- Buyer Advanced Workspace
- Customer Order & Profitability Insights

LA / early adopters for Gen AI Assistant

- Project
- PLM
- Quality

infor Copyright © 2024. Infor. All Rights Reserved. infor.com 8

35

LN Velocity Suite Deliverables

New Value+ Content 2025.04

- Financial Closing Reconciliation
- Invoice Processing
- Sales Contract Fulfilment
- Purchase Order Updates
- Vendor Compliance Checks
- Return Sales Order Automation
- PLM for Discrete Structure Creation
- PLM For Discrete Excel to Import Package
- Automation of Receipts
- Financial Closing Unallocated Receipts

Upcoming Value+ Content Post April

- Project Cost Forecasting
- Vendor Performance Insights
- Buyer Advanced Workspace
- Customer Order & Profitability Insights

LA / early adopters for Gen AI Assistant

- Project
- PLM
- Quality

infor Copyright © 2024. Infor. All Rights Reserved. infor.com 8

36

18

Not yet available in IGS

Financial Closing Reconciliation (Value+ Content)

Utilizes RPA and IDP to automate the generation and examination of approximately 50 reports, consolidating discrepancies into a single notification.

Requirement

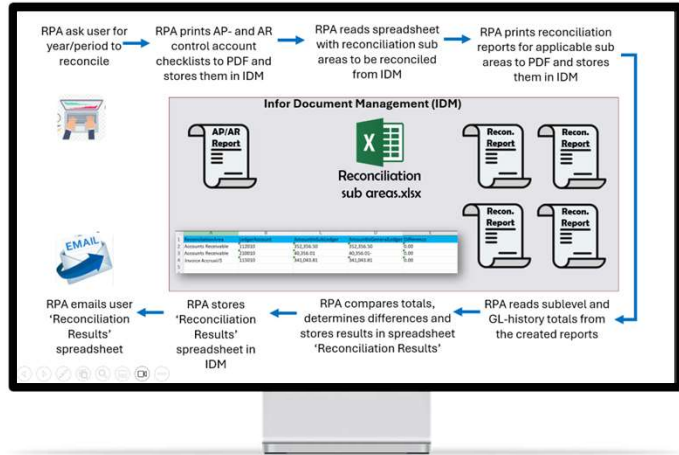
- The current reconciliation process is labor-intensive and inefficient, requiring users to manually print circa 50 reports with multiple configuration options and individually check each one for differences.
- Opportunity to improve this process by automating these tasks, saving time and enhancing accuracy.

Solution

- Use RPA and IDP to automate the running of financial reports and the detection of discrepancies
- Provide a single notification that summarizes all differences across reports, eliminating the need for manual intervention.

Benefit

- **Increased Efficiency:** Dramatically reduces time spent on manual report handling and discrepancy checking, expediting the financial closing process.
- **Resource Optimization:** Allows financial teams to focus on more strategic activities, improving productivity and job satisfaction.
- **Proactive Management:** Delivers timely notifications of discrepancies, enabling quicker resolution and improving financial reporting accuracy.



37

Copyright © 2025, Infor. All Rights Reserved. infor.com

37

LN Velocity Suite Deliverables



Copyright © 2025, Infor. All Rights Reserved. infor.com

38

38

19

GenAI Assistant Improvements 2025.04

(Limited Availability)



Project

- Analyze and Summarize differences between two project budget versions.
- Identify budget overruns and schedule delays.
- Identify production and purchase orders at risk of delay.
- Compare original vs. expected project contract margins.



Quality

- Identify the major reasons contributing to non-conformance reports (NCRs).
- Identify NCRs that result in design changes.
- Identify NCRs that lead to supplier and customer claims.
- Generate a Quality Inspection report for a specific supplier and item or work center and item.



PLM

- List assemblies/sub-assemblies that use the component with quantities.
- List alternative items for component.
- Implement mass changes to replace components in multiple structures.
- Add/Remove Component to/from a BOM
- Update the quantity of a component in a BOM

infor

Copyright © 2025. Infor. All Rights Reserved. infor.com 39

39

More to come in session:
LN Cloud Value+ solutions
 14:00 – 14:40 hrs.

infor

40

20

Roadmap Velocity Suite for LN Industry CloudSuites

Examples of use cases

- Value+ use cases – post-April
- Build “smart capabilities” for functional domains
- Extend Value+ use cases for LN Industry CloudSuites
 - Financial Closing use cases
 - Accounts receivable automation
 - Quality problem detection - triggers follow up actions regards to Return to vendor or Rework order
 - Warranty claim processing
 - Project Cost Forecasting - for all cost types
 - Inventory Optimization and Projections
 - Profitability Analysis
 - Manage Purchase contracts - Influenced by delivery performance and prices in contract
 - RFQ recommendation - Send to which suppliers and evaluate results
 - Cash flow forecasting
- GenAI Assistant General Availability
- Extend GenAI Assistant capabilities
 - Gen AI Assistant for other domains
 - Assisted Authoring
 - Finance Logistics Traceability
 - Prompt configurator - Pre engineered prompts that trigger specific API's in background
 - Smart filters - “Show me sales order in region xyz for November”
 - Proposal drafting - Drafting project proposals, contract documentation etc



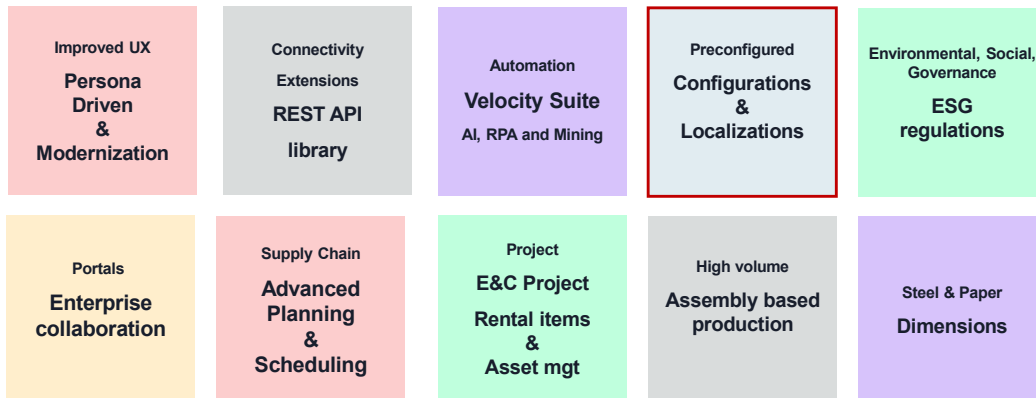
41

Copyright © 2025. Infor. All Rights Reserved. infor.com

41

Discrete Enterprise industries (CS IE, CS E&C, CS A&D, CS Auto)

Themes for 2025 (H2) and beyond



Copyright © 2024. Infor. All Rights Reserved. infor.com 42

42

21

LN Common

Implementation Optimization with Configuration options



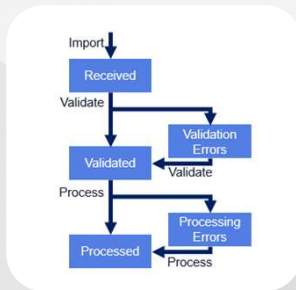
Copyright © 2025. Infor. All Rights Reserved. infor.com 43

43

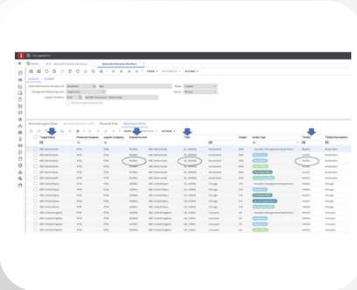
Configuration - Implementation efficiency



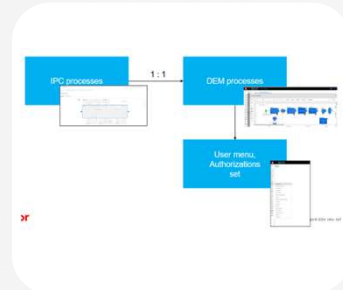
Business partner entry
(Available April 2024)



Creation of enterprise structure
(Planned April 2025)



IPC – DEM connection
(Available October 2024)



Copyright © 2024. Infor. All Rights Reserved. infor.com 44

44

22

Localization



47

LN CLOUD 2025.04
WORLD VIEW – February 2025 - Roadmap

Americas Argentina Brazil Canada Chile Colombia* Ecuador Honduras Mexico* Nicaragua Panama Peru Surinam USA Uruguay Venezuela	Europe Austria Belgium* Bulgaria Croatia* Czech Republic Denmark Estonia Finland France Germany* Greece Hungary* Ireland Italy* Latvia Lithuania Luxembourg Malta Netherlands Norway Poland* Portugal* Romania Russia Serbia* Slovakia Slovenia* Spain* Sweden Switzerland Ukraine United Kingdom*	Africa Algeria Angola Botswana Egypt Kenya Morocco Namibia Nigeria South Africa Tanzania Tunisia Zambia Zimbabwe	Asia / Pacific Australia* China Hong Kong India Indonesia* Japan Malaysia* Mongolia New Zealand Philippines Singapore South Korea* Thailand Vietnam*
---	---	--	---

50

LOCALIZATIONS
IN STANDARD

24

LOCALIZATIONS -
LICENSED

11

COUNTRIES
ON ROADMAP

Middle East

- Bahrain
- Iraq
- Israel
- Jordan
- Kuwait
- Lebanon
- Oman
- Qatar
- Saudi Arabia
- Turkey
- United Arab Emirates

*LS (Infor Localization Services) is part of the country coverage functionality

Languages

Arabic	Czech	German	Korean	Russian	Swedish
Bulgarian	Dutch	Hebrew	Polish	Serbian	Thai
Chinese - Simplified	English	Hungarian	Portuguese-BR	Slovakian	Turkish
Chinese - Traditional	Finnish	Italian	Portuguese-PT	Slovenian	Ukrainian
Croatian	French	Japanese	Romanian	Spanish	Vietnamese

29

GENERAL
AVAILABLE
LANGUAGES

1

LANGUAGE ON
ROADMAP

Copyright © 2024, Infor. All Rights Reserved. infor.com 48

48

24

Argentina Localization

Requirement

- Coverage for Argentina localization in LN Cloud

Solution

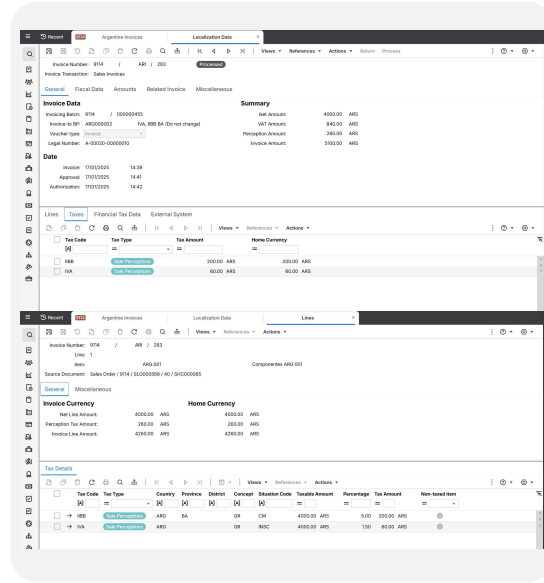
- The following requirements have been covered:
 - ✓ Tax Configuration: Setup for Calculation of Perception and Retention taxes.
 - ✓ Maintain and Print Delivery Note for shipments.
 - ✓ External Approval: Submit e-invoice to AFIP to obtain approval to issue Invoice
 - ✓ Financial: Calculation of IVA, Perception and Retention on Invoices and Payments
 - ✓ Digital Files: Soportes Magneticos for IVA, SICORE, SIRE, GLD, Monotributo, Padrones, SIFERE

Benefit

- Customers doing business in Argentina will have coverage for statutory requirements
- Argentina now aligned with other South American country localizations and no need for a separate instance
- Multi-site capabilities available
- Removes major blocker to cloud upgrade



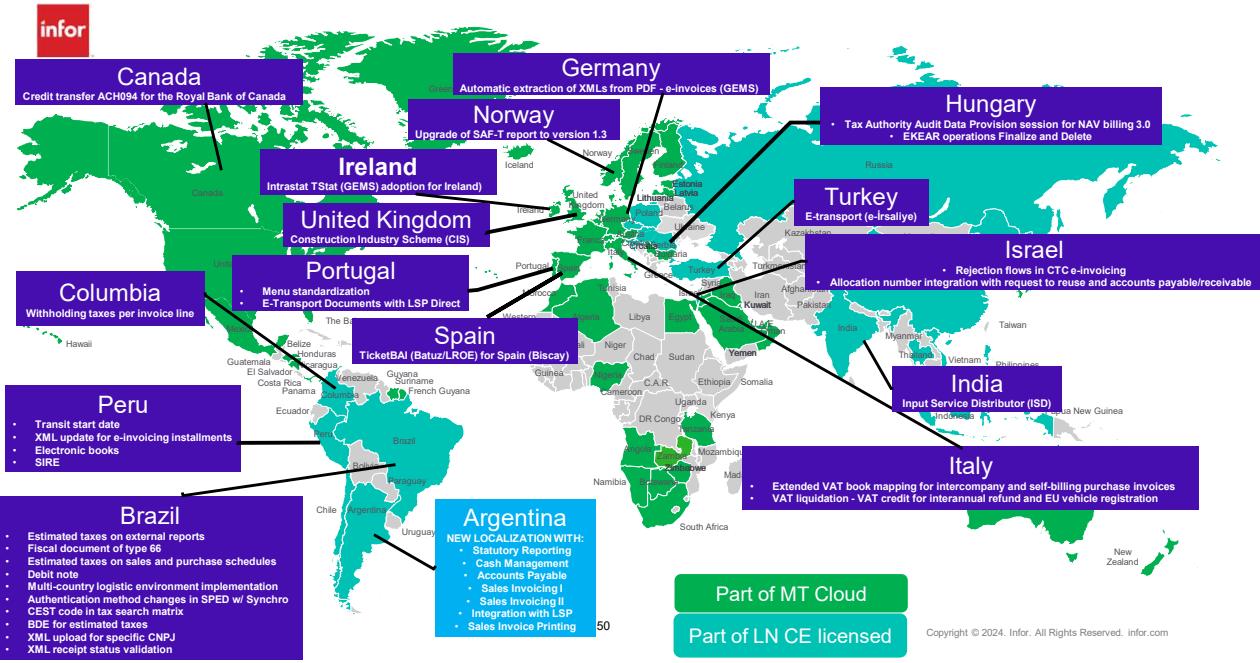
49



Copyright © 2025. Infor. All Rights Reserved. infor.com

49

Infor LN Cloud 2025.04 – Localization coverage, additional functionality



50

25

Integration with Localization Services Platform (LSP)

Integration with Localization Services Platform

- ✓ e-Transport Documents with LSP Direct for Portugal
- ✓ TicketBAI (Batuz/LROE) for Spain (Biscay)
- ✓ rejection flows in CTC e-invoicing for Israel
- ✓ e-transport (e-Irsaliye) for Turkey
- ✓ Construction Industry Scheme (CIS) for the United Kingdom
- ✓ upload of supplier invoice to IDM from e-invoice attachment
- ✓ submission of PDF invoices created in LN to PEPPOL

Integration with Localization Services Platform (GEMS)

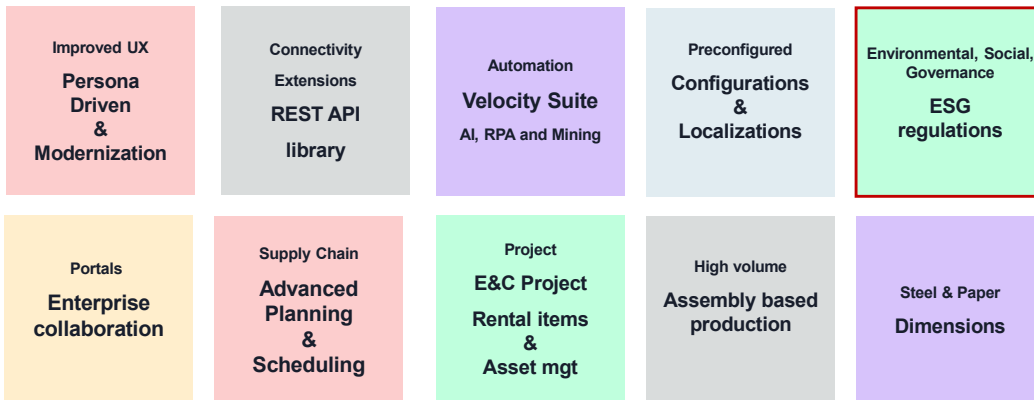
- ✓ bank statement camt053.001.08 for multiple countries
- ✓ credit transfer ACH094 for the Royal Bank of Canada
- ✓ automatic extraction of XMLs from PDF - e-invoices (GEMS) for Germany

Integration with Localization Services Platform - Intrastat TStat (GEMS)

- ✓ Adoption for Ireland



Discrete Enterprise industries (CS IE, CS E&C, CS A&D, CS Auto) Themes for 2025 (H2) and beyond



ESG strategy Infor: four initiatives

ESG - Strategy Planning and Reporting (SPE)

- Support the change management ESG and the reporting according to international frameworks



ESG - Extended Product Information (EPI)

- Tracing the ESG footprint of products from the source to end-of-life*



ESG - Taxes, Emissions and due diligence (TED)

- Product based ESG taxes
- Emission related
- Due diligences related

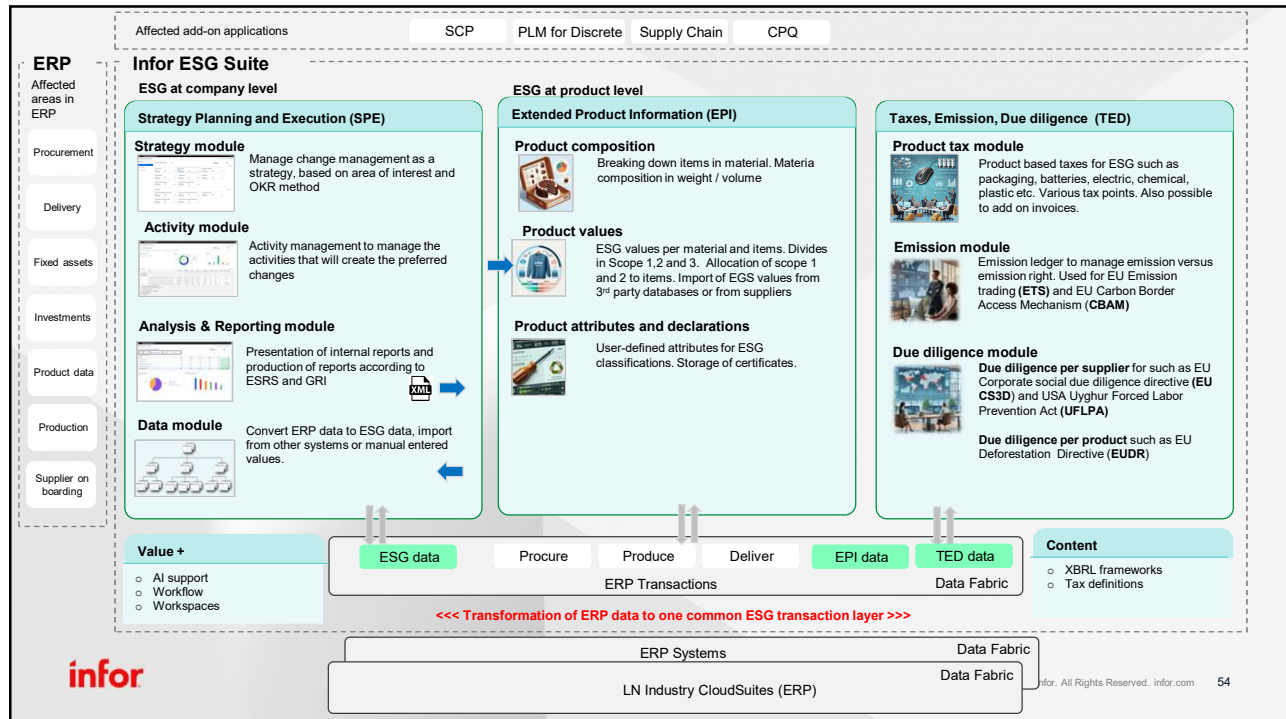


ESG - Integrate in business processes

- Changes in existing business processes and new business processes to support ESG



53



54

27



55

Infor ESG

New Application – Strategy Planning and Execution (SPE)

Strategies drive change! One popular strategy today involves **ESG** and how customers will change to meet **ESG** request and reporting requirements.

“ In the end, a strategy is nothing but good intentions, unless it’s effectively implemented”
 Clayton Christensen

Problem

- Companies often want change and have strategies, but they are **not successful** in the implementation of their strategies.
- “ In the end, a strategy is nothing but good intentions, unless it’s effectively implemented”**
Clayton Christensen
- Reporting according to the rules in a framework such as **ESRS** has been described as **“compliance to death”**.

Benefits

The SPE application combines

- Strategy definition and management
- Activity management
- Data management that provides data and metrics for analysis and reporting

A trio of strong modules that will increase our customers ability to succeed in their strategy implementation and reduce the effort to report on their ESG situations against reporting frameworks such as **GRI** and **ESRS**

Solution

A new SPE application with:

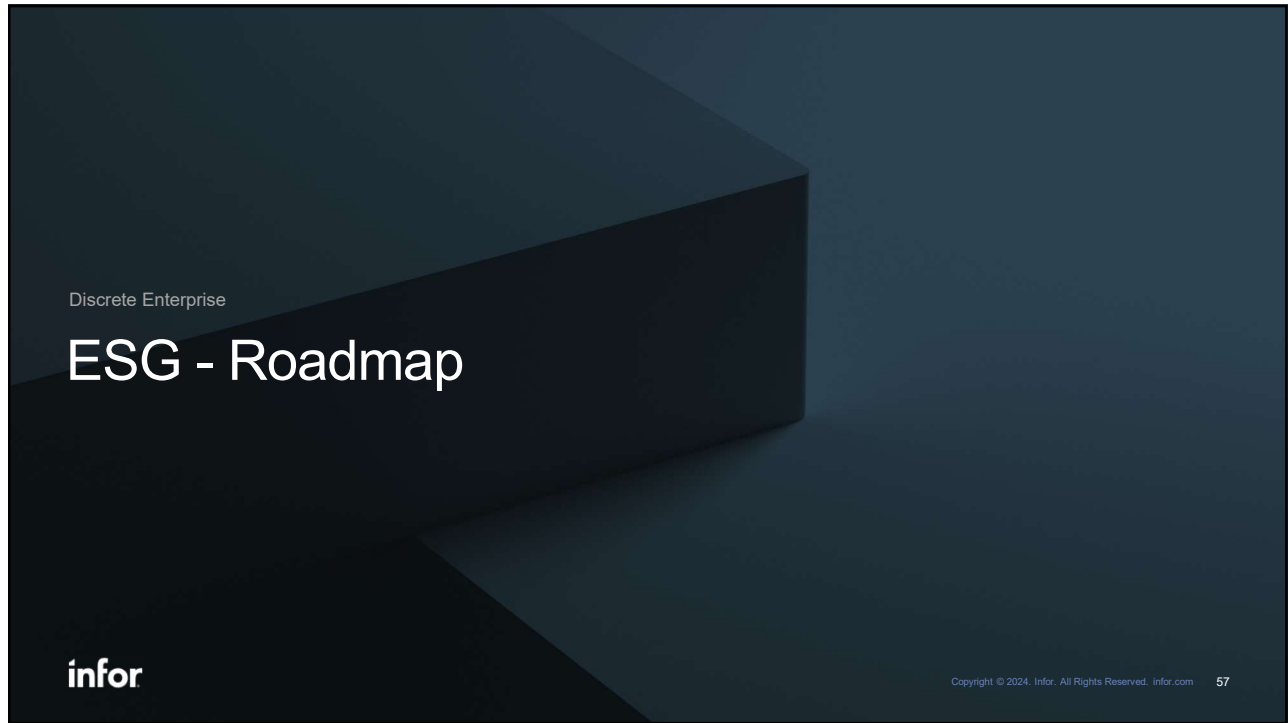
- Strategy module** - definition and implementation method
- Activity module** – define and follow up activities that will make the requested change
- Data module** - convert ESG data to strategy metrics
- Analysis model** - where metrics and KPI’s can be viewed
- Connection pack to both M3 and LN

Copyright © 2025. Infor. All Rights Reserved. infor.com 56

Limited Availability

56

28



57

Infor Cloud

SPE – Roadmap Highlights

October 2025– Under development	April 2026 – Under consideration	2026+ – Under evaluation
<p>SPE Application</p> <p>Application administration</p> <ul style="list-style-type: none"> ● Roles and access management <ul style="list-style-type: none"> ▪ Introduce roles and access management based on roles in IFS <p>Activity manager</p> <ul style="list-style-type: none"> ● Application messages <ul style="list-style-type: none"> ▪ Send messages when a task is allocated to a user, or user is changed, when a task is closed to expected ready date and reminder to report status at period end <p>Data manager</p> <ul style="list-style-type: none"> ● Data capture – General ledger <ul style="list-style-type: none"> ▪ For scope 1 ● Data capture – Accounts payable <ul style="list-style-type: none"> ▪ For scope 2 <p>Analysis and reporting manager</p> <ul style="list-style-type: none"> ● Analysis boards <ul style="list-style-type: none"> ▪ Line templates based on Metrics structures. Column template for selection of periods, values, calculation between columns. Connection from Area of impact to the analysis board 	<p>Data manager</p> <ul style="list-style-type: none"> ● Data capture – Procurement <ul style="list-style-type: none"> ▪ For scope 3 <p>Analysis and reporting manager</p> <ul style="list-style-type: none"> ● ESRs/GRI Reporting <ul style="list-style-type: none"> ▪ being able to create ESRs/ GRI reports in XBRL format <p>ESG Content packages</p> <ul style="list-style-type: none"> ● ESRs package <ul style="list-style-type: none"> ▪ Import strategies and Area of interest, metrics and structures according to ESRs structure ▪ Add possibility to manage narrative date points to the reporting framework. <p>Workspaces</p> <ul style="list-style-type: none"> ▪ Widgets strategy owners ▪ Widgets for Area of impact owners 	<p>SPE Application</p> <p>Strategy manager</p> <ul style="list-style-type: none"> ● Cost and resources estimates <ul style="list-style-type: none"> ▪ Being able to attached estimated cost and internal resources to each AOI. Rollup in the strategy structure. Ability to enter expected result in revenue or other values. Prioritization between the alternatives ● Audit of changes <ul style="list-style-type: none"> ▪ Visualization and search of changes done in the SPE module for one strategy. (all changes exists in data lake) <p>Data manager</p> <ul style="list-style-type: none"> ● Validation of data <ul style="list-style-type: none"> ▪ Routine where responsible at org level 2 can authorize the values before they roll-up to corporate level. <p>ESG Content packages</p> <ul style="list-style-type: none"> ● GRI Package <ul style="list-style-type: none"> ▪ Import strategies and Area of interest, metrics and structures <p>AI Based additions</p> <ul style="list-style-type: none"> ● Regression analysis of outcome ● Does the activities have an impact on the outcome ● Provide proposal on activities based on my objectives and expected key results ● Provide proposals for Key ratios based on my objectives and expected key results

58

29



More to come in session:
ESG Initiatives, Roadmap and Infor Strategy Planning and Execution
 16:50 – 18:00 hrs.

infor

59

Discrete Enterprise industries (CS IE, CS E&C, CS A&D, CS Auto) Themes for 2025 (H2) and beyond

Improved UX Persona Driven & Modernization	Connectivity Extensions REST API library	Automation Velocity Suite AI, RPA and Mining	Preconfigured Configurations & Localizations	Environmental, Social, Governance ESG regulations
Portals Enterprise collaboration	Supply Chain Advanced Planning & Scheduling	Project E&C Project Rental items & Asset mgt	High volume Assembly based production	Steel & Paper Dimensions

infor

Copyright © 2024, Infor, All Rights Reserved. infor.com 60

60

Enterprise Collaboration Portal for LN Cloud - Vision

An online collaboration channel for LN Cloud customers (contractors), suppliers and subcontractors to view and collaborate on orders, receipts/ASNs, contracts, invoices, and projects.

Enterprise Collaboration Portal

Portal platform

- External ID access for suppliers
- External resource access limited information
- Attach documents
- Two-way communication
- Role-based access
- Expiring documents indicator
- o Migration path to ECP
- Onboarding**
- Expression of Interest (EOI)
- Onboarding templates
- Review and approval flow for supplier and main contractor
- Add Nature of Supply/Trade Service



Value

Services Suppliers (subcontractors)

- Services procurement order
- Application for Payment
- Variation request
- o Certificate for Payment
- o Retention Request
- o Dashboard/Workspace for



Materials Suppliers

- Purchase order for supplier
- Negotiation Purchase Order
- Receipt and ASN *
- o Purchase invoice
- o Self-billing invoice
- o Request for Quotation (RFQ)
- o Purchase schedules



Customers

- Sales Portal *
- o Contracts
- o Invoices
- o Project Status (graphical)
- o Rental Quote

Project-based

- o Utilization Equipment
- o Site diary
- o Daily log
- o Hours booking
- o Change Request
- o BIM viewer

The Purchase Order Negotiation / Change Management will be a post-April release

Capabilities



* WIP for next release (2025.10)

61

Copyright © 2025. Infor. All Rights Reserved. infor.com 61

This feature may require additional, specialized licensing

61

Material Suppliers capabilities now in Enterprise Collaboration Portal

Purchase Order Negotiation / Change Management delivered post-April 2025



Buyers saving time on routine procurements tasks, as they manage their relationship with material suppliers through ECP



Increased supplier engagement leads to stronger long-term relationships and improved delivery rates



Advanced insights in potential delivery changes will contain risk and stop issues before they become a problem



Both buyer and suppliers can view the same real-time purchase order data, providing an efficient user experience



Copyright © 2025. Infor. All Rights Reserved. infor.com 62

62

31

Enterprise Collaboration Portal – Purchase Order Change Request and Negotiation Management (post April 2025 release)

Efficiently collaborate online with material suppliers on awarded purchase orders. Notify of changes and negotiate amendments for customer and supplier

Problem

- Buyers face multiple manual and disconnected comms methods (emails, phone calls, paper documents) when interacting with material suppliers
- Material suppliers require timely communication about changes to existing purchase orders
- Alert buyers when order requirements and requested changes cannot be met



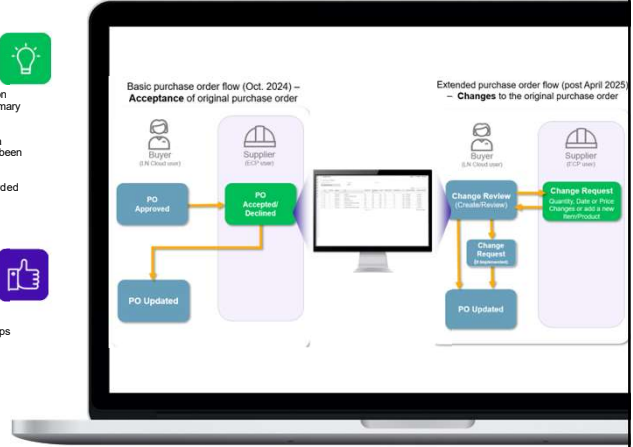
Solution

- Buyers can collaborate with material suppliers on price, date, and order quantity, making it the primary channel of communication.
- The result of changes to original orders will be a change request in LN once the negotiation has been finalized
- Material suppliers can conditionally accept awarded orders, and both parties can submit change requests and negotiate at any time.



Benefits

- Buyers save time on routine tasks, freeing them up to focus on more strategic activities
- Fosters greater transparency and enhances collaboration with suppliers, leading to stronger long-term relationships
- Early information about potential changes with regards to the requested material supplies
- Improved AP productivity on account of higher rate of 3-way matching



Copyright © 2024, Infor. All Rights Reserved. infor.com 63

This feature may require additional, specialized licensing

63

Enterprise Collaboration Portal – Updating new trade offering

Increased collaboration between LN Cloud customer users and subcontractors by adding new trade offerings in an efficient way.

Problem

- Subcontractor extends offering and requires updates to its record post onboarding to reflect additional nature of supply or service trade



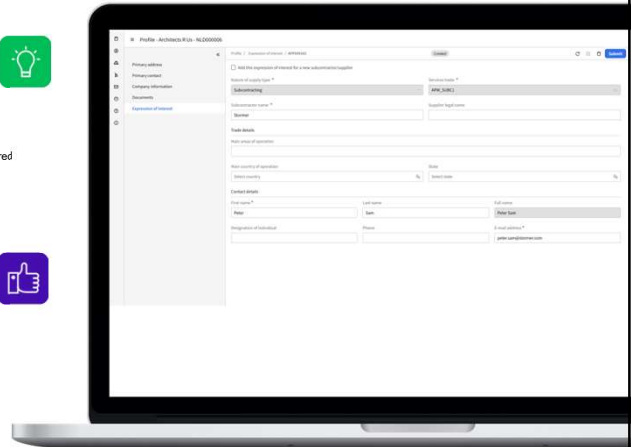
Solution

- Subcontractors able to update their onboarding record, adding additional natures of supply or service trades
- Onboarding will use a selection of the existing Business Partner information that is already stored in LN Cloud to speed up the process



Benefits

- Greater efficiency of business, which relies heavily on up-to-date data
- Time savings for customers because the effort to keep data current will be leveraged to subcontractors



Copyright © 2025, Infor. All Rights Reserved. infor.com 64

This feature may require additional, specialized licensing

64

32

Enterprise Collaboration Portal – Expiring documents indicator

Increased collaboration between LN Cloud customer users and subcontractors through the Enterprise Collaboration Portal, by adding alerting capabilities for mandatory documents.

Problem

- Subcontractor users need a means in the portal to show which compliance documents are expiring soon or have expired.
- Contractors need a means to communicate the same message to a group of suppliers and subcontractors



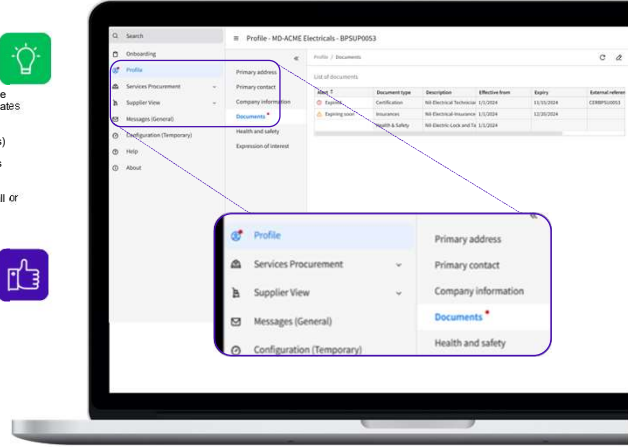
Solution

- Subcontractor sees a visual indicator through the portal about upcoming expiry dates or expired dates for documents
- The Subcontractor can take (pro-)active action(s)
- Contractor can define the time period for what is expiring soon (how many days out)
- Contractor can send a notification message to all or a selection of suppliers or subcontractors



Benefits

- Efficiency of business relies heavily on up-to-date data and current documents.
- Time saving for customers, as the effort of keeping data up to date will be leveraged to its subcontractors
- Current, up to date compliance documentation reduces risks for all parties
- Timely information about general information messages



Copyright © 2025. Infor. All Rights Reserved. infor.com 65

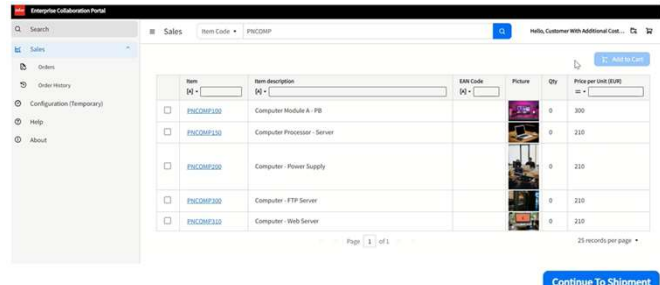
This feature may require additional, specialized licensing

65

Roadmap Enterprise Collaboration Portal

1. Sales Portal

- Extending the LN Cloud online collaboration channel to the customers of LN Cloud customers, to provide them with an online sales portal, to request material or spare parts.

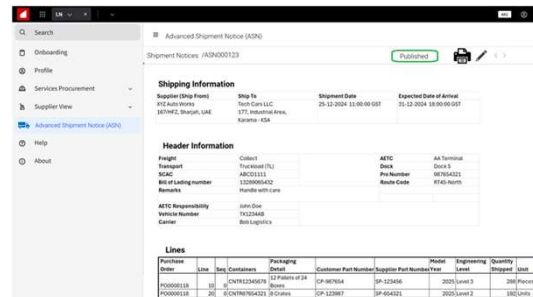


2. Extended Procurement flow

- Create Advanced Shipment Notice (ASN)
- Receive the ASN in LN
- Create Supplier Invoice

3. Platform enhancements

- Rule-based annual/periodic review of subcontractors, to model which type of review would be required
- Solution for updates of Onboarding Sections (e.g. Service Offering, Health and Safety)



66

33

Discrete Enterprise industries (CS IE, CS E&C, CS A&D, CS Auto) Themes for 2025 (H2) and beyond

Improved UX
Persona Driven & Modernization

Connectivity Extensions
REST API library

Automation
Velocity Suite
AI, RPA and Mining

Preconfigured
Configurations & Localizations

Environmental, Social, Governance
ESG regulations

Portals
Enterprise collaboration

Supply Chain
Advanced Planning & Scheduling

Project
E&C Project Rental items & Asset mgt

High volume
Assembly based production

Steel & Paper
Dimensions

infor Copyright © 2024. Infor. All Rights Reserved. infor.com 67

67

Advanced Planning and Scheduling for LN Cloud - Vision

Planner Plus

- Finite Material Planning
- Finite Capacity Planning
- Setup Optimization
- SoldTo BP Priority
- Due Date respect

Value

Capabilities

Production Planner/Supply Chain Planner

- Finite Material Planning (2024.10)
- Finite Capacity Planning (2024.10)
- Graphical Analysis Tools (2024.10)

Nov-Dec releases (2024.11/12)

- Resource Plan
- Supply orders and destination

GA Release

- o Plan Monitors
- o Additional diagnostic tools
- o Screen improvements
- o Planning Engine Updates

Finite Scheduling

- o Address short-term / JS related.

infor * WIP for next release
Copyright © 2025. Infor. All Rights Reserved. infor.com 68

68

Planner Plus – Constraint-Based Planning Engine

A constraint-based planning engine that analyzes the enterprise order plan against capacity and/or material constraints. The planning engine allows for certain forms of optimization based on factors not considered by LN order planning, such as priority and setup optimization.

Problem

- Order Planning against infinite resources will plan supply in the past and/or plan resource allocations above what is available
- The result is that the output of the planning is unrealistic and requires a lot of manipulation to work through exception messages and manually planned orders



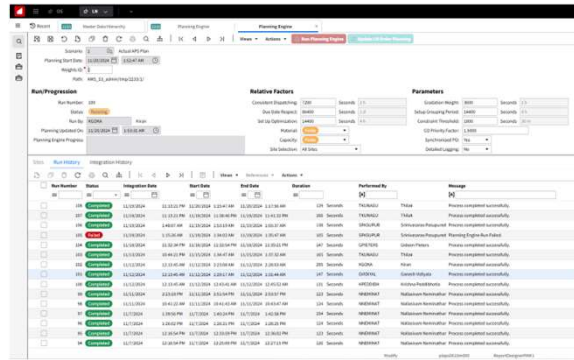
Solution

- A constraint-based planning engine that evaluates the output of the order planning against set constraints and applies a certain level of logic to optimize the plan
- Creates a realistic plan that can be confirmed for processing in LN purchase, production and distribution/warehouse processes.



Benefits

- Visualization of the link between delays and the constraint(s) that cause it.
- Provides simulation approaches to impact the outcomes of the planning engine in terms of trade-offs between inventory, throughput, delivery on time, prioritization of customers.
- Optimized planned production sequences outside the time fence (planning horizon)



Planner Plus - Analytical Tools – Resource Utilizations

Several new analytical tools to analyze outputs of the constraint-based planning engine. The resource plan provides a view of the resource load from different angles to give detailed insights into the resource load.

Problem

- The ability to show production- and supply chain planners any impact on delayed orders, resources, and inventory.



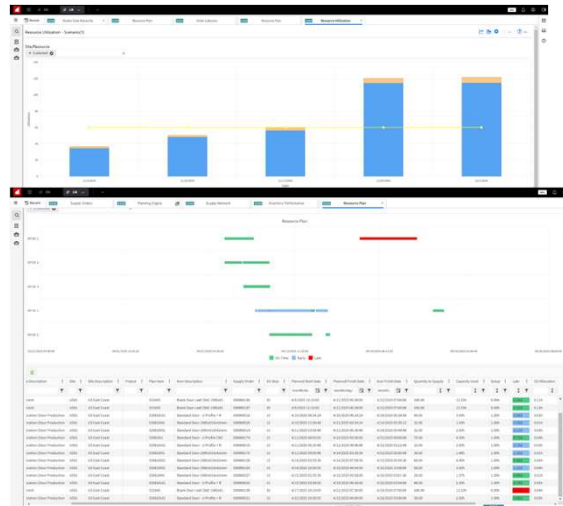
Solution

- Introduction of Diagnostic Tools Workbenches to analyze impact of planning engine scenario-specific output
- Diagnostic Tools Include:
 - Order Lateness Diagram
 - Supply Chain Network
 - MPS View
 - Inventory Overview
 - Resource Utilization
 - Resource Plan
 - Transaction Viewer etc.



Benefits

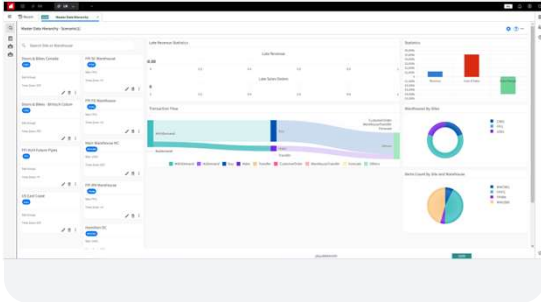
- Provides all information needed to perform an analysis of - and help to resolve - problems involving late orders, performance bottlenecks, inventory levels, cash flows, etc.
- Helps identify problems, the constraints that cause it, and the impact on the supply chain.



Planner Plus (APS) – Analysis Tools

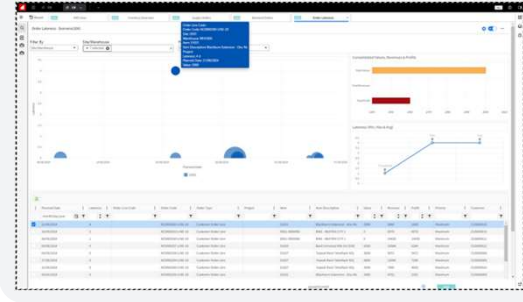
Supply orders and destination (Sankey Diagram)

The supply orders and destinations visualizes the logistic flow at a very high level.



Order Lateness Diagram

The order lateness diagram, plots the projected lateness of supply (or demand) relative to the due date and the value of the order.



Copyright © 2024. Infor. All Rights Reserved. infor.com 71

71

Planner Plus - Analytical Tools – Transaction viewer

Several new analytical tools to analyze outputs of the constraint-based planning engine. The transaction viewer plots demand, supply and projected inventory graphically.

Problem

- The aim of planner plus is to balance supply and demand while considering constraints in the supply chain. Production and Supply-Chain planners need to be able to view and analyze demand and supply patterns at (plan)item level. The requirement is to view the details of the projected movements and the results.



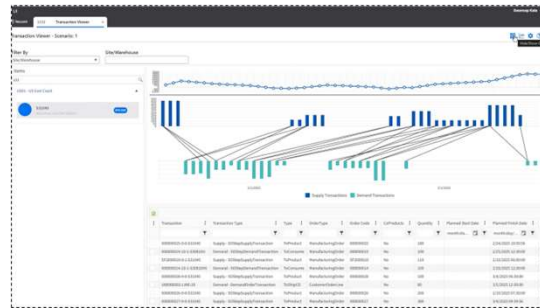
Solution

- A transaction viewer is introduced plotting demand, supply and projected inventory graphically and showing the pegging from supply to demand.
- The grid underneath shows the transaction plotted so users can review the detail.



Benefits

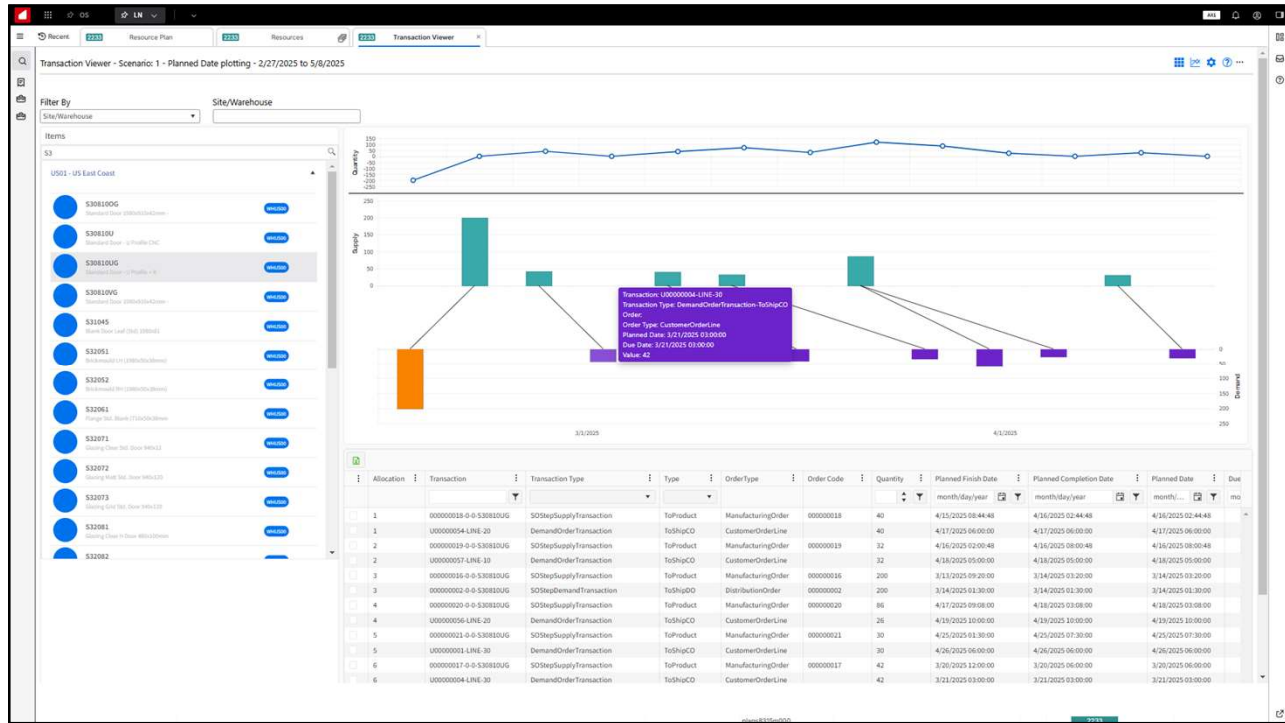
- The transaction viewer offers an easy configurable visual of demand and supply at (plan) item level focused on how the supply and demand are linked over time.
- Provides a great tool to understand the planned transactions in time.



Copyright © 2025. Infor. All Rights Reserved. infor.com 72

72

36



73

Advanced Planning and Scheduling (APS) Roadmap

Planner Plus

1. Planner – dynamic sourcing

Scheduler Plus - Using latest Cloud technology for fast calculations – same as PlannerPlus

1. Finite capacity at qualified team level
2. Finite availability of materials
3. Scheduling at the operation level



74

37

Discrete Enterprise industries (CS IE, CS E&C, CS A&D, CS Auto) Themes for 2025 (H2) and beyond

Improved UX Persona Driven & Modernization	Connectivity Extensions REST API library	Automation Velocity Suite AI, RPA and Mining	Preconfigured Configurations & Localizations	Environmental, Social, Governance ESG regulations
Portals Enterprise collaboration	Supply Chain Advanced Planning & Scheduling	Project E&C Project Rental items & Asset mgt	High volume Assembly based production	Steel & Paper Dimensions

infor Copyright © 2024. Infor. All Rights Reserved. infor.com 75

75

Discrete Enterprise

Project

infor Copyright © 2024. Infor. All Rights Reserved. infor.com 76

76

Cumulative Contract billing for Projects - Concept

Business case

- Progress billing based upon the portion of work (Agreed Contract Scope) completed to date
- Contractor is expected to make an application for payment (periodically), detailing the work carried out
- The customer will assess the application and payment will be made for applied or less than applied for work.
- Cumulative process that will include payment retentions in next period
- US requirement for AIA (American Institute of Architects) billing process (G702 and G703)



2025.04 Delivery
(first release)

Available since 2023.04
Services Procurement Order and
Supplier Application for Payment



Benefits for LN Cloud customers

- Regular payment schedule makes it easy to predict and control cash flow
- Improved relationships due to early identification of agreed payments
- Assess work before completion and resolve disputes
- Visibility of retention amounts and structure for retention release and/or final settlement

Copyright © 2025. Infor. All Rights Reserved. infor.com 77

Cumulative Contract billing for Projects (first release)

Cumulative Application for Payment logic applied to the (Project) Contract, to allow our customers to manage cumulative contract billing process

Problem

- Contract Managers must manage a cumulative contract billing process when interacting with customers
- Scope of work should include options for flexible contract agreements, cost and sales rates, and other details that may be required by the customer
- Payless scenario should be supported, including reasons for payless
- AIA (American Institute of Architects) billing process is an industry-standard in the US



Solution

- Can create an Application for Payment to submit the claim of work done in a period
- Offers a facility to capture the customer acknowledgement of the AFP and refer to a customer document number
- Captures the assessed and certified value of the customer, including payless notice (if relevant)
- Support for US AIA – Schedule of Values and Application for Payment process



Benefits

- Regular payment schedule makes it easy to predict and control cash flow
- Improved relationships due to early identification of agreed payments
- Assess work before completion and resolve disputes
- Visibility of retention amounts and structure for retention release and/or final settlement
- Support for industry-standard AIA billing process



Previous Period	Current Period	Cumulative	Scope Description	Line	Project	Line Type	Quantity	Sales Price	Sales Amount
			30 0 Removing old electrical work	PL000030	Electric Works, Mumb, Amount Only		0.0000	0.0000 INR	0.00 INR
			20 0 Electrical Wiring	PL000020	Electric Works, Mumb, Quantity and Rate		200.0000	50.0000 INR	10000.00 INR
			40 0 Electrical Piping	PL000040	Electric Works, Mumb, Rate Only		0.0000	30.0000 INR	0.00 INR

Copyright © 2025. Infor. All Rights Reserved. infor.com 78

Project Roadmap Topics

- Contract Change Management
- Contract Cumulative Billing – phase 2
 - Materials at Site
 - Applied value accounting
 - Retention / Holdback accounting

infor

Copyright © 2024, Infor. All Rights Reserved. infor.com 79

79

Discrete Enterprise

Project-driven Rental

infor

Copyright © 2024, Infor. All Rights Reserved. infor.com 80

80

40

Rental

Key messages

LN Rental solution will be supporting 'servitization' business models, as well as improve the equipment solution for project-centric industries.



'Servitization' model

Customers will be able to generate new business streams. Rather than only selling products, business models can be extended to renting products.



Equipment for project industries

Project customers are focused on managing their key resources, people, material and equipment. New rental capabilities will offer a flexible solutions that answer the dynamic nature of the business.



Copyright © 2024. Infor. All Rights Reserved. infor.com

Embedded LN Cloud Rental solution Rental business scenarios



Embedded LN Cloud Rental solution

Customer type

- ✓ Rental to end customers
- ✓ Project driven rental

Rental product

- ✓ Uniquely identifiable rental product
- ✓ Anonymous rental product
- ✓ Mixed scenarios

Planning and scheduling

- ✓ Warehouse transactions for outbound (renting out) and inbound (return)
- ✓ Graphical Equipment Management Workbench

Invoicing scenarios

- ✓ Rental charge
- ✓ Additional items (e.g. consumables)

Maintenance and repair

- ✓ Existing Service functionality



Copyright © 2024. Infor. All Rights Reserved. infor.com

New LN Analytics for Rental + All LN Analytics Go GA

New LN Analytics added to analyze rental products. The complete suite of LN Analytics declared General Available. Provisioning will be fully automated.

Problem

- Customer wants to analyze their rental products
- The provisioning of the LN Analytics required the tenant admin to submit a provisioning request.
- The provisioning of the LN Analytics happened after the upgrade of the LN Cloud release.
- When an upgrade is provisioned then the existing LN Analytics will be erased. Customer must take actions to save content extensions.



Solution

- Rental metrics have been added to analyze rental products based on hours rented out, hours utilized or under maintenance, and cost behind it.
- Provisioning of LN Analytics is now automated
- No existing content will be erased.



Benefits

- Analyze rental products for insights and informed decision-making
- Provisioning of LN Analytics is now part of the standard upgrade process of an LN CE release.



Project-driven Rental Roadmap

- Internal equipment – charge project based on utilization
- Support Rental Products in Physical Breakdown
- Intercompany trade: Rental Rates by Rental Office
- Quote for Rental Order/Agreement
- Improve performance of business processes
- Mobile Field Service - Support Rental Agreements
- Operational Workspace for Rental Equipment Dispatcher persona



Discrete Enterprise

Rental / Asset Management

infor

Copyright © 2024. Infor. All Rights Reserved. infor.com 85

85

Logistical Asset Master - details

Insights:

1. How was the Asset used
2. Financial depreciation
3. Which jobs were fulfilled with this asset
4. At which locations / sites / machines was the asset used
5. What cost charges connected to the asset
6. Can we produce

Logistical Asset Master

- Quality
- Rental
- Service management (repair and maintenance)
- Procurement
- Production / Usage
- Analytics / Business Intelligence
- Logistics / Transportation
- Fixed Asset management

infor

Copyright © 2024. Infor. All Rights Reserved. infor.com 86

86

43

Rental / Asset Management Roadmap

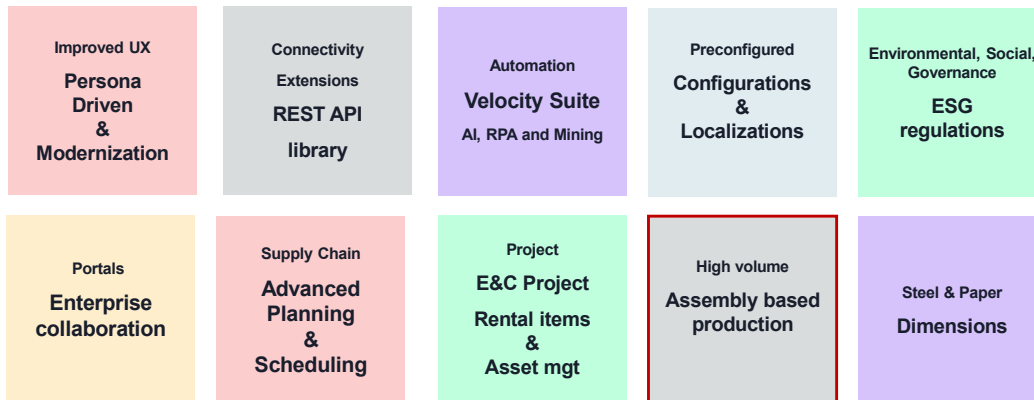
- Logistical Asset Master
 - Functional alignment cost object equipment and rental product
 - Introducing “light” logistics for equipment rental
 - Procurement, sales and production of rental items / equipment object (diverse scenarios)
 - Service Actual Service Costs to Fixed Asset
 - Tracking asset



Copyright © 2024. Infor. All Rights Reserved. infor.com 87



Discrete Enterprise industries (CS IE, CS E&C, CS A&D, CS Auto) Themes for 2025 (H2) and beyond



Copyright © 2024. Infor. All Rights Reserved. infor.com 88

Assembly Control

Business fit

- High volume of products or components assembled
- Products that are highly configurable
- Unique configuration per product
- Production layout is line based (not multi-purpose work centers)
- Process driven, not BOM driven
- Backflushing of high volume of parts



Copyright © 2024, Infor. All Rights Reserved. infor.com 89

89

Assembly Control 2.0

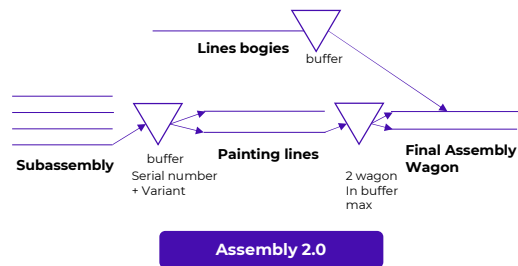
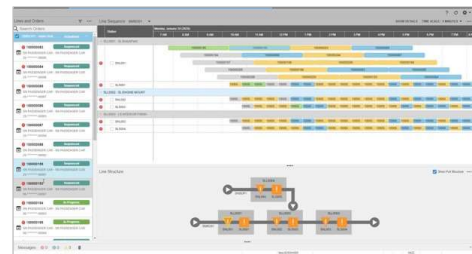
Addresses the challenges in Automotive & Aerospace where unique product Changes through integrated PLM on the main assembly line require to be planned and synchronized with feeder lines.

Solution

- Multiple feeder lines
- Call-offs from warehouses of configured subassemblies
- Efficient work-load balancing
- Variants of the same item supported

Benefits

- Advantages of Line Assembly control – flow-based production
- Backflushing per time period
- Flexibility in line structure and line workload



Copyright © 2024, Infor. All Rights Reserved. infor.com 90

90

Assembly Control 2.0

Addresses the challenges in Automotive & Aerospace where unique product Changes through integrated PLM on the main assembly line require to be planned and synchronized with feeder lines.

Solution

- Multiple feeder lines
- Call-offs from warehouses of configured subassemblies
- Efficient work-load balancing
- Variants of the same item supported

Benefits

- Advantages of Line Assembly control – flow-based production
- Backflushing per time period
- Flexibility in line structure and line workload

Introduction of Sites and Assembly line numbering increasing flexibility

Warehouses between feeder lines and final assembly lines (configured subassemblies in inventory)

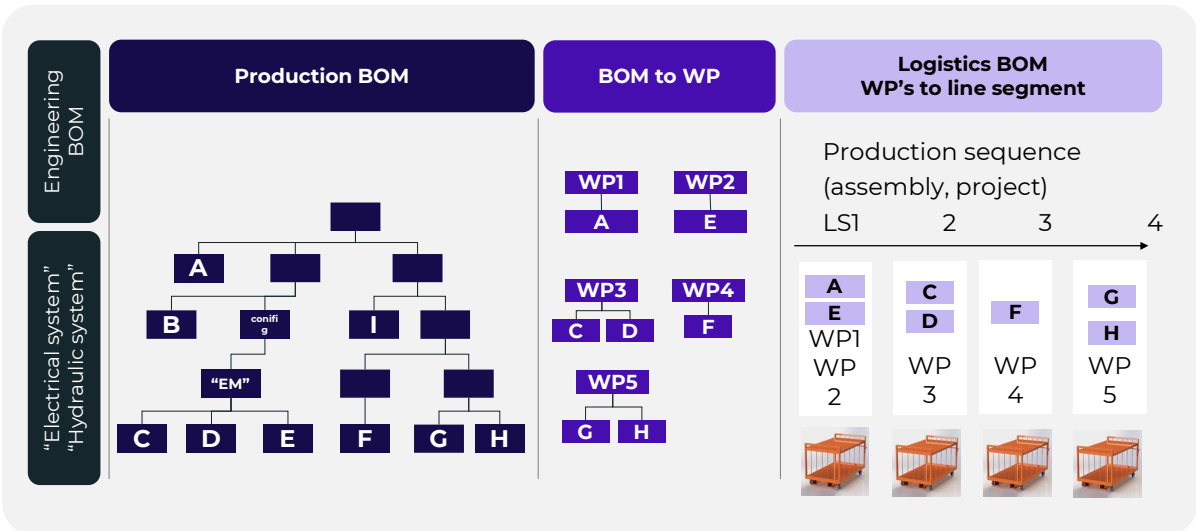
Introduction of Work Packages

Module APL (Assembly planning) will be made redundant

Assembly 2.0

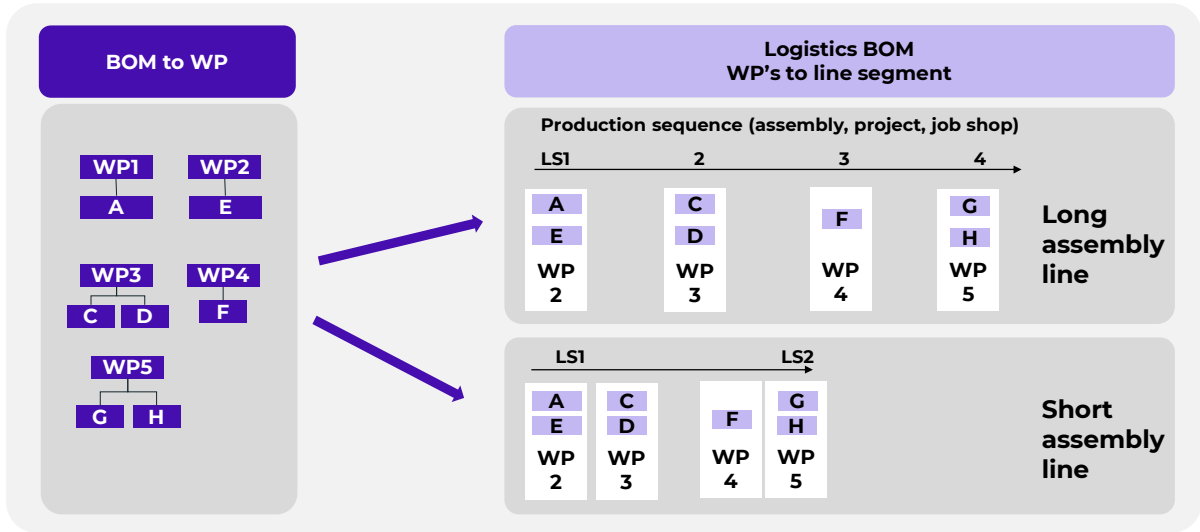
91

Work packages



92

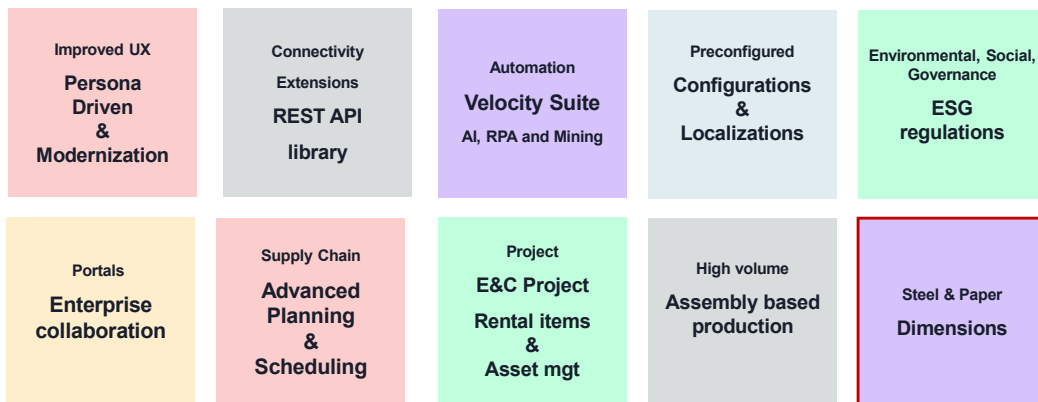
Work packages



Copyright © 2024, Infor. All Rights Reserved. infor.com 93

93

Discrete Enterprise industries (CS IE, CS E&C, CS A&D, CS Auto) Themes for 2025 (H2) and beyond



Copyright © 2024, Infor. All Rights Reserved. infor.com 94

94

47

What is Product Dimensions?

- Is an "Attribute Driven" ERP solution
- Uses Attributes, Attribute Values and Tolerances to to:
 - Define Products - A Tube with a Wall Thickness of 0,5mm, A Diameter of 25mm and a Length of 6m
 - Search Inventory - Which Inventory do we have of Products having Paper Type "Gloss Paper", with a Grammage of 60gr/m2, a Width between 80cm and 120cm, and a Color "RAL 9010" or "RAL 9001"
 - Enter, Receive, Ship and Complete Orders - A Sales Order line is entered for A Wide Flange Beam, 2 Pieces with a Width of 85mm, a Height of 105mm, a Length of 6 Meter, which should be Powder Coated
 - Calculate Purchase/Sales Prices - The price of Double Side Coated Sheets differs from the Price of Sheets which are not Coated



Infor LN CE Product Dimensions - Release 1

Copyright © 2023. Infor. All Rights Reserved. infor.com 95

95

Infor LN Product Dimensions is developed for Industries

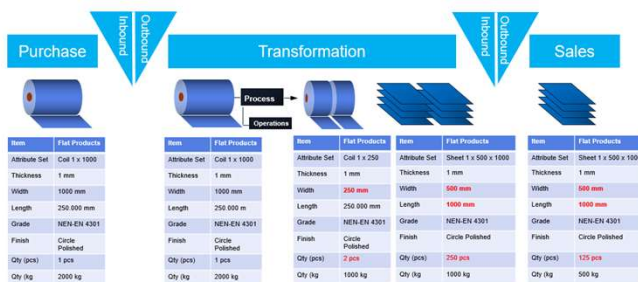
- Having few Items, but an unlimited number of variations within the Item
- Where Orders are entered using Attributes and Tolerances
- Where Multiple Units of Measure are used
- Where planned is almost never the same as actual
- Where Processes like Cutting, Slitting, Sawing are part of the Core Value Add Process

Steel Industries

- Grade
- Thickness
- Width
- Length
- Finish
- Coating, ...

Paper Industries

- Paper Type
- Grammage
- Width
- Length
- Color, ...



Copyright © 2023. Infor. All Rights Reserved. infor.com 96

96

Dimensional Control

Customer Service & Value

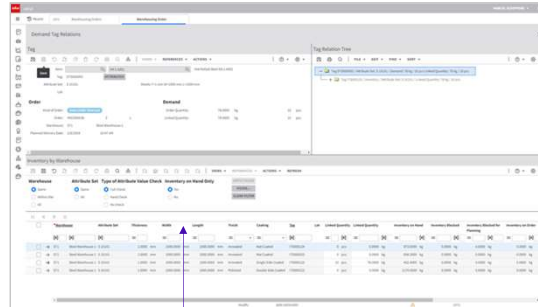
New capabilities being introduced to manage the order-to-cash lifecycle for products with dimensional characteristics and unlimited number of form factors typically found in metals, board & construction materials,

Solution

- Handles transformational production processes
- Attribute based conversion factors (e.g., kilograms to m2 based on thickness of steel)
- Apply to length, width, thickness, finish, color and more attributes
- Sell, buy, make and stock according to dimensional & form characteristics

Benefits

- Accurate inventory: tracking quantity of items in stock based on dimensions
- Order fulfillment: match customer specifications with available inventory
- Tolerances: take orders, match & fulfil within tolerance ranges
- Accurate pricing based on dimensions and characteristics
- Simplification of SKU management



Define by width, length, finish, coating, tag, etc



Copyright © 2024, Infor. All Rights Reserved. infor.com 97

97

Wrap-up

Improved UX

Connectivity

Automation

Preconfigured

Environmental, Social, Governance

Portals

APS - Supply Chain

Project and Rental

High volume – Assembly

Steel & Paper – Dimensions



Copyright © 2024, Infor. All Rights Reserved. infor.com 98

98

49

Q&A



infor

Copyright © 2025. Infor. All Rights Reserved. infor.com 99

Customer resources

infor

Copyright © 2024. Infor. All Rights Reserved. infor.com 100

How to stay informed on LN Cloud releases



Release report

Each released feature (enhancements and solutions) documented



Release training

Introducing slides and prerecorded Using sessions



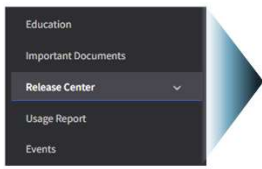
Release Highlights

Live presentations of selection of release features (recording available)

Service Now / Infor U / Infor Concierge (Release Centre)

101

Release Materials for CloudSuite releases Discrete Enterprise industry solutions



My Release Information

Use the materials available to help you prepare for RT releases.

View Report Center components and materials available to help you prepare for the next year's work.

- View [RT Release Report Overview](#)
- View Release and Component as part of the release with the release additional information. The following materials may also be available the first Thursday of the month prior to the release. Release highlights is a presentation that provides an overview of key enhancements.
- View the available Webinars for releases for Release Highlights, please see [RT Release Training](#) for more information on how to access the recordings.
- View training opportunities for releases for release presentations and webinars.
- View [RT Release Training](#)

Access the global North, South America and Europe release schedules.

[View calendar](#)

Release Materials

Access the latest release details and see release availability dates. For Release Center assistance or any general questions, please contact your Customer Care general support team.

Product Line	Release Report	Release Highlights
Administrative Exchange	AS-2024-25_Release_Overview	AdministrativeExchange_Release_Overview.pdf
CRM	CRM-2024-25_Release_Overview	CRM_Release_Overview.pdf
Event Mgr	EM-2024-25_Release_Overview	EM_Release_Overview.pdf
CloudSuite	CS-2024-25_Release_Overview	CloudSuite_Release_Overview.pdf
CloudSuite Analytics	Refer to product specific KB article	CloudSuite_Analytics_Release_Overview.pdf
CloudSuite Chemicals	Refer to product specific KB article	CloudSuite_Chemicals_Release_Overview.pdf
CloudSuite Distribution	Refer to product specific KB article	CloudSuite_Distribution_Release_Overview.pdf
CloudSuite Distribution Enterprise	Refer to product specific KB article	CloudSuite_Distribution_Enterprise_Release_Overview.pdf
CloudSuite Distribution Enterprise Essentials	Refer to product specific KB article	CloudSuite_Distribution_Enterprise_Essentials_Release_Overview.pdf
CloudSuite Engineering and Construction	Refer to product specific KB article	CloudSuite_Engineering_and_Construction_Release_Overview.pdf
CloudSuite Equipment	Refer to product specific KB article	CloudSuite_Equipment_Release_Overview.pdf
CloudSuite Fashion	Refer to product specific KB article	CloudSuite_Fashion_Release_Overview.pdf
CloudSuite Food and Beverage	Refer to product specific KB article	CloudSuite_Food_and_Beverage_Release_Overview.pdf
CloudSuite Healthcare	Refer to product specific KB article	CloudSuite_Healthcare_Release_Overview.pdf
CloudSuite Industrial Enterprise	Refer to product specific KB article	CloudSuite_Industrial_Enterprise_Release_Overview.pdf



LN Cloud Release Report in KB1975828

Copyright © 2024, Infor, All Rights Reserved. infor.com 102

102

51

Release report – Example

To be downloaded from KB1975828

1	2	3	4	5	6	7	8	9	10	11	12	13	14	15
Release	Product Line	Component	Issue Type	Summary	Overview of Change	Detailed Description	Potential Business Process Impact	Potential Technical Process Impact	Feature Flag(s)	Test				
2025.04.00	LN	LN Order Management	Defect	KB to deliver requirements on top of 2025.04	KB to deliver requirements on top of 2025.04	KB to deliver requirements on top of 2025.04	No impact expected	No impact expected		No p				
2025.04.00	LN	LN Order Management	Defect	Fatal error when recalculating price/discounts for entire quote	When recalculating the price and discounts for entire quote, a fatal error is given regarding an empty field.	When recalculating the price and discounts for entire quote, no fatal error is given regarding an empty field anymore.	No impact expected	No impact expected		No p				
2025.04.00	LN	LN Order Management	Defect	session id00r23m000 is missing	As session "Correct Sales Order Line Option List ID" (id00r23m000) is missing it cannot be stored.	Delivered session "Correct Sales Order Line Option List ID" (id00r23m000).	No impact expected	No impact expected		No p				
2025.04.00	LN	LN Order Management	Defect	Write off billable line for SB return is not possible	Write off billable line for SB return is not possible. This is happening because for the return order, the shipment field of the sales order invoice record is not filled but the receipt field is.	Write off billable line for SB return should be possible. The search of the sales invoice record should be based on the receipt field.	No impact expected	No impact expected		No p				
2025.04.00	LN	LN Order Management	Defect	Cannot confirm purchase receipt (direct del pur order) because the actual receipt date may not be later than today.	Cannot confirm purchase receipt (direct del pur order) because the actual receipt date may not be later than today.	In case actual receipt date is later than today, the actual receipt date should change in the today's date.	No impact expected	No impact expected		No p				
2025.04.00	LN	LN Order Management	Defect	The activity Calculate Standard Cost is not inserted anywhere on a sales order line.	The activity Calculate Standard Cost is not inserted anywhere in session "Sales Order Line" (id00r23m000) even though Program FCS (Invoice for Sales Order) is executed and FCS is not used.	The activity Calculate Standard Cost is added to the order line activities.	No impact expected	No impact expected		No p				
2025.04.00	LN	LN Order Management	Defect	Purchase Order Collaboration Integration	Purchase Order Collaboration Integration is not complete.	Added more functionality regarding Purchase Order Collaboration Integration	No impact expected	No impact expected		No p				
2025.04.00	LN	LN Order Management	Defect	KB to deliver requirements on top of 2025.04	KB to deliver requirements on top of 2025.04	KB to deliver requirements on top of 2025.04	No impact expected	No impact expected		No p				
2025.04.00	LN	LN Order Management	Defect	Purchase Order Header Status Not updating to Cancelled	For the Purchase Order Change Request the Header Status is set to Modified when all lines are cancelled.	The Purchase Order Change Request header status is set to cancelled when all lines are cancelled.	No impact expected	No impact expected		No p				
2025.04.00	LN	LN Order Management	Defect	Step Size for Lines is not correctly defaulted when inserting Sales Office by site	Step Size for Lines field is not correctly defaulted when inserting a sales office in session Sales Office (id00r23m000) even though setting line default Sales Order Parameters is selected.	Step Size for Lines is now defaulted from the sales orders parameters when inserting a sales office.	No impact expected	No impact expected		No p				
2025.04.00	LN	LN Order Management	Enhancement	Value+ Enterprise Automation - vendor compliance check	Value+ vendor compliance check.	A vendor compliance check can now be performed against the USA Office of Inspector General (OIG) Checklist, using Enterprise Automation, including Automatic Process Automation, the tool downloads the denial list, uploads it for analysis, and employs a SQL model for name and address matching. It then generates a report of vendors to audit. Additionally, the status of the US business partners found in the OIG checklist can be set to Inactive using an API.	No impact expected	No impact expected		No p				
2025.04.00	LN	LN Order Management	Enhancement	Value+ Enterprise Automation - return sales order processing	Value+ return sales order processing.	The ability to use Robotic Process Automation (RPA) to extract the original sales order number and data from an email and create return sales order lines is now supported. Customers can configure the RPA arguments to specify the order series, return order type, and return reason.	No impact expected	No impact expected		No p				
2025.04.00	LN	LN Order Management	Enhancement	Value+ Enterprise Automation - extraction of purchase order data from an email and update of the purchase order object	RPA - extract purchase order data from email and update the purchase order object.	The ability to use Robotic Process Automation (RPA) to extract purchase order data from an email and update the purchase order line(s) is now supported.	No impact expected	No impact expected		No p				
2025.04.00	LN	LN Order Management	Enhancement	Field validation for sales contract activation	Sales contract lines - check mandatory fields for activation.	To ensure that a contract can be used in an Automotive context, contract validation has been added. Sufficient validation is a prerequisite to use the contract in the Release Management component of Automotive Exchange. During the activation of a sales contract that requires validation, these checks are performed: The Contract Type must be set to Normal Contract. The SOCS Business Partner field must be filled. The Ship-to Business Partner must be populated for all contract lines. The Customer Item number must be specified for each contract line. The Contract Line logistic data must be available for each contract line. The Sales Office field must be filled at the line level.	Minor	No impact expected	Off	No p				



Prerecorded Release Training – Example

Infor U Campus

Course Title	Description	Format	Duration	Status	Feature Release	Adoption Ready
LN Course Release Plan - Dashboard Tools	This course covers the new Planner Plus application, the constant based planning engine which is included along the SCS Planning Engine and is now delivered in MY Cloud. The diagnostic tools are a set of options that assist the planning process by providing a depth analysis of the constant based plan.	eLearning	00:24	Not started	2025.04	2024.10
LN Course Release Plan	This course covers the new Planner Plus application, the constant based planning engine which is included along the SCS Planning Engine and is now delivered in MY Cloud.	eLearning	00:14	Not started	2025.04	2024.10
LN Productive Release Plan Data	This course covers the new Planner Plus application, the constant based planning engine which is included along the SCS Planning Engine and is now delivered in MY Cloud.	eLearning	00:44	Not started	2025.04	2024.10
LN Course Additional FPO Templates for Top Down Bill of Material	This course describes how to use the additional CPQ templates for the Top Down Bill of Material and the Top Down Billing for a multi-level configurative structure. This is for item type generic with default factory supply lines. This is a company inventory configuration to Site to activate. Feature Release 2025.04.	eLearning	00:35	Not started	2025.04	2025.04
LN Course Sales Order Class Creation - Allow Partner Programs and Participation with Linked Order Lines	Creation of new Sales Order Class Creation - Allow Partner Programs and Participation with Linked Order Lines. In addition, the ability to update the last receipt field on the Sales Order Lines that will update the linked Purchase Order Lines was not possible until this release. Feature Release 2025.04.	eLearning	00:02	Not started	2025.04	2025.04
LN Course Sales Contract Lines - Check Mandatory Fields for Activation	This course details the product use of the sales contract validation introduced in this release. Feature Release 2025.04.	eLearning	00:50	Not started	2025.04	2025.04
LN Course Country of Origin in Inventory Enhancements	This course details the product use of the enhancements for country of origin in inventory revealed in this release. This includes the specification of the country of origin during the inspection and quarantine process, country of origin and source and country of origin for cost and service terms. Feature Release 2025.04.	eLearning	00:38	Not started	2025.04	2025.04
LN Course Implementation Determination - Impact Enterprise Structure on LN	This course details how get a checklist of new implementation projects to automatically measure a customer's enterprise structure for LN as introduced in this release. Based on input from the customer, automatically the enterprise structure (companies, sites, planning clusters, enterprise units, departments) and supported can be created. Feature Release 2025.04.	eLearning	00:54	Not started	2025.04	2025.04
LN Course Integration with SAP CRM - Back Statement	It is possible to process different back statements through to CRM by their classification services. The ERP generation file is now generated in SAP and will be available in the SAP Statement Worksheet report. Including a comparison between the company and of the CRM statement. Feature Release 2025.04.	eLearning	00:09	Not started	2025.04	2025.04



Prerecorded Release Training – Example

Infor U Campus

1. Filter on Training Type
2. Filter on Product
3. "Apply Filter" after change
4. Sort on Feature Release

The screenshot shows the Infor U Campus Course Catalog interface. On the left, there are two filter panels. The top panel has 'Filter by' buttons for 'Clear Filter' and 'Apply Filter'. Below it, 'Status' is set to 'All'. 'Training Type' is set to 'Release Training'. 'Category / Product' is set to 'LN'. The bottom panel also has 'Filter by' buttons and shows 'Status' as 'All', 'Training Type' as 'Release Training', and 'Category / Product' as 'LN'. The main content area is a table with columns: Course Title, Description, Format, Duration, Status, Feature Release, Adoption Ready, and a final column with a '1'. The table lists several course titles related to LN 2025.04 releases, such as 'LN 2025.04 Release Planning - Diagnostic Tools' and 'LN 2025.04 Release Planning - New Planner'.



105

Release Highlights for CloudSuite releases

Discrete Enterprise industry solutions

A vertical navigation menu with options: Education, Important Documents, Release Center (highlighted with a dropdown arrow), Usage Report, and Events.

Access to the recording will become available here

A screenshot of a document titled 'LN Industry CloudSuites 2025.04 Release Highlights'. The document contains a table with columns for 'Feature', 'Description', and 'Availability'. Several rows in the table are highlighted in yellow.

A banner for 'LN Industry CloudSuites 2025.04 Release Highlights'. It features the Infor logo, a 'CLOUDSUITE SOLUTIONS' badge, and an image of a robotic arm. The text 'INDUSTRY SPECIFIC' is displayed in a purple box. At the bottom, it says 'Product Management' and 'Copyright © 2025. Infor. All Rights Reserved. infor.com'.



106

