



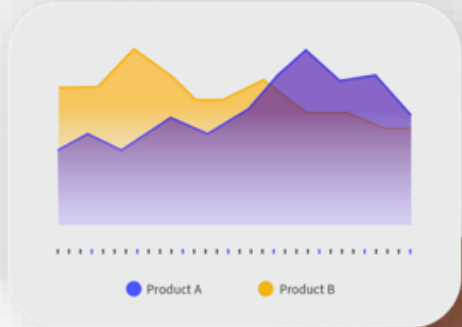
Infoteam 2026

What's new and next for integration

Erik Stanzé
Principal Development Business Analyst

Henrik Johansson
Senior Director, Software Development

March 17-18, 2026



CLOUDSUITE SOLUTIONS



INDUSTRY SPECIFIC

Agenda

1

Integration in cloud

2

**Integration deliveries
& Enhancements**

3

Platform deliveries

4

**Road maps
and plans**

Disclaimer

- This presentation reflects the direction Infor may take with regard to the products or services described herein, all of which is subject to change without notice. This presentation is not a commitment to you in any way and you should not rely on any content herein in making any decision.
- Infor is not committing to develop or deliver any specified enhancement, upgrade, product, service or functionality, even if such is described herein. Many factors can affect Infor's product development plans and the nature, content and timing of future product releases, all of which remain in the sole discretion of Infor. This presentation, in whole or in part, may not be incorporated into any agreement. Infor expressly disclaims any liability with respect to this presentation.

Integration overview

Integration in cloud

Infor Industry Cloud Platform

One connected platform for innovation and AI-driven intelligence

Add-Ons: Advanced Solutions



Infor Velocity Suite

Infor Value+
Solution Catalog
Infor Document
Processor

Infor Process
Mining & Modeler
Infor GenAI

Infor Robotic Process
Automation
Infor
Advanced Services



Infor Augmented Intelligence Service (AIS)

Infor AIS
Solution Catalog

Infor Data Scientists
as a Service

Add-Ons: Advanced Technologies



Infor
Birst Enterprise



Infor Backend
as a Service



Infor Data
Stream Pipelines



Infor Enterprise
Performance
Management



Infor Governance,
Risk, & Compliance

Infor OS

Artificial
Intelligence

GenAI
Embedded Experiences
& Assistant

Document
Management

Application
Development

Data
Fabric

Streaming
Ingestion

Security & User
Management

API Gateway

Scripting

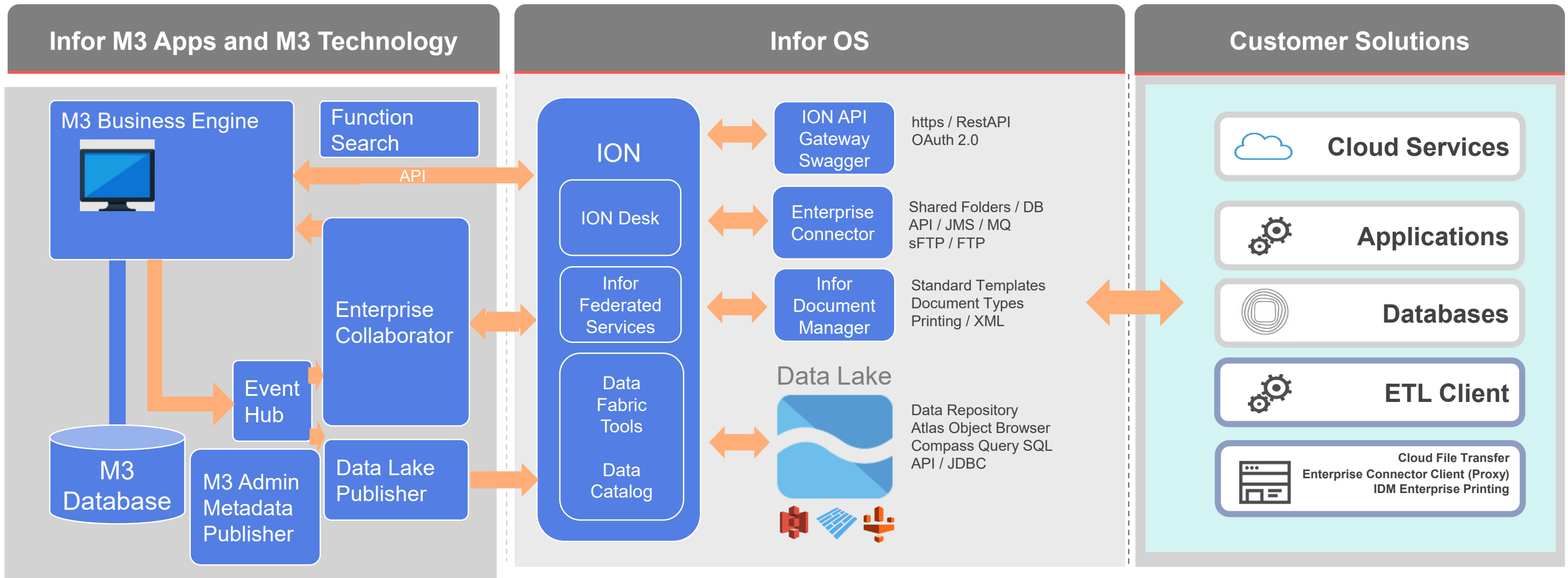
Cloud Egress

Storage Capacity

Integration

M3 Integration Architecture

Update Build Publish



Infor Platform Technology

Accelerating innovation for the enterprise



Connect

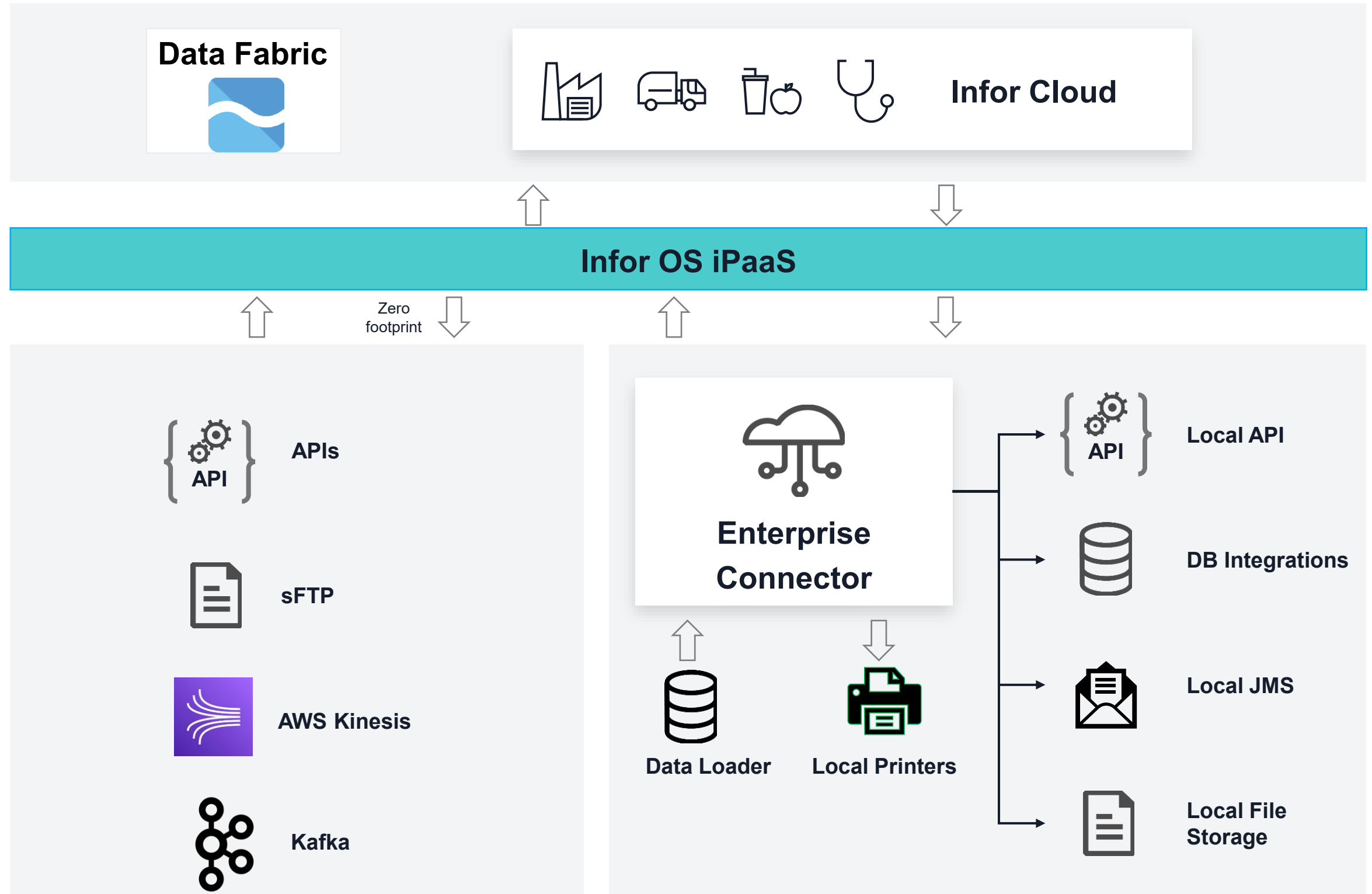
Transform

Automate

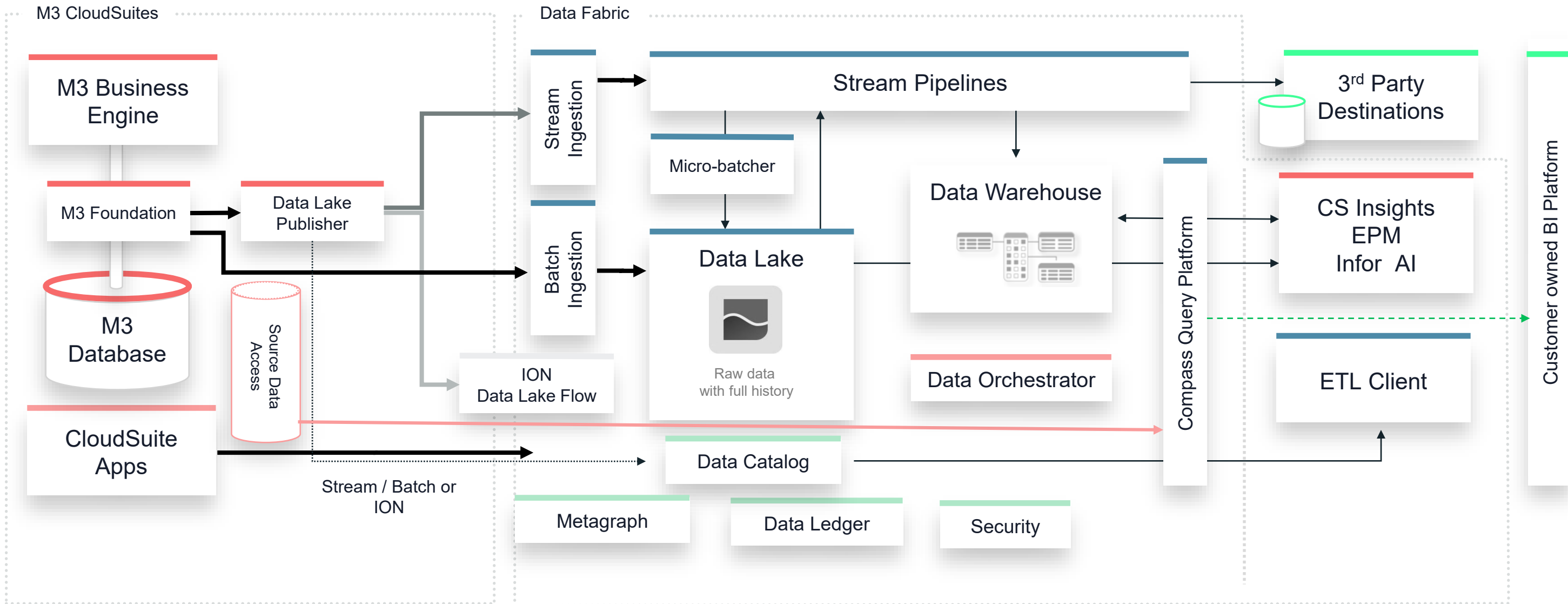
Extend

Infor OS | iPaaS

Connectors



M3 and Data Fabric



M3 Integration

A day in M3's life

7M+

IEC Messages/day

0,6M

IEC messages for one tenant/day

30K

Avarage EH messages published/s (Frankfurt)

300K+

Peak load events published/S

50K+

Events published/s for one tenant

4x

Transaction Growth over last 12 Months

385M

API Calls Per Day

80+%

M3 API Calls through MEC

20M

XtendM3 Executions Per Day

Cloud Momentum

In Numbers

↗
119+

Countries Accessing
Per Day

↗
2x+/4x+

Overall/XtendM3
Transaction Growth
Over Year

↗
90M+

ION API Calls
Per Day

↗
1B+

Total API Calls
Per Day

↗
245M+

XtendM3
Executions Per Day

↗
1M+

Outputs to IDM
Per Day

↗
124B

DB Queries
Per Day

↗
800TB+

Data Storage
(4-5x compressed)

Investment areas



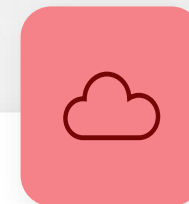
Industry Complete

Refining our integrations and extensions to help lower service costs, while investing in the critical micro-vertical capabilities that matter most to your business



Innovation

Support businesses to be nimble and flexible through data insights, automation, integrations, and technology adoption to deliver new experiences



Platform Modernization

Support cloud maturity, stability, and continuous performance improvement.

Infor ION Roadmap Highlights

October 2026– Under development

Industry Complete

- Additional data about ION Workflow instances in the Data Lake
- AMQP connector
- Mandatory parameters in ION Workflows tasks
- Support unc paths for File Connector

Innovation

- ION MCP servers and tools:
 - MCP tool to execute a Python script
 - MCP tool to Start a Workflow
 - MCP tools for Notification Center
 - MCP tools for OneView
- New ION use cases for the Health Service
 - Error BODs
 - ION Connectors queues status
 - Database connector issues

Platform Modernization

- Extended JSON support in ION Connectors (Database Connector, API Connector)
- Database drivers update
- Scheduler for auth tokens renewal in the Enterprise Connector.
- Support additional authentication type using IAM role for Kinesis Adapter

April 2027 – Under consideration

Industry Complete

- Kafka for Enterprise connector
- Allow users to save Workflow attachments to the IDM public space
- Extended JSON support (ION Monitors)
- Improve JSON support in Data Flows: content-based routing and filters

Innovation

- Agentic iPaaS:
 - AI Agents in Data Flows
 - AI Agents in Workflows
 - ION Connectors as MCP tools
- GenAI:
 - Workflow models generation based on prompts
 - Data Flow models generation based on prompts
- Data Warehouse support in ION Data Flows
- Data Fabric streaming pipelines adoption
- New ION use cases for the Health Service

Platform Modernization

- Improved observability in iPaaS
- Database drivers update

2027+ – Under evaluation

Industry Complete

- Extended JSON support (Mapping, Merging, etc.)
- Unassign ION activities (tasks, notifications, alerts) from inactive users
- Change the ION activities' Distribution Group based on changes in the IFS Group
- AWS Event Bridge connector

Innovation

- Agentic iPaaS:
 - Generative Integration: Generate dynamic Workflows or Data Flows
 - Generative Integration: Generate and execute custom connectors
 - Data Mapping/Transformation
 - ION Connectors as MCP tools
 - Human in the loop
- AI Monitoring:
 - Detecting anomalies, patterns trends
 - Self-healing

Platform Modernization

- Database drivers update
- ION Workflows forms improvements
- ION Workflows Email templates improvements

Usability& Documentation

- Enhance user experience
- Documentation improvements
- Best practice guidelines
- Statistics
- Visibility over cloud suite

Current state and future focus

Prioritized cloud maturity development done and key features that many customers have asked for has been delivered. But there are still a lot to do to satisfy all needs.

API Support

- Rest API enablement of critical features
- Enhanced configuration management

AI & Agents

- Review logs
- Compare artifacts
- Generate code and rules

Integration deliveries

Delivery Mechanisms

Knowledge Base

- *Not supported by Dev Organization*
- *Documentation in KB if any.*

Marketplace – Infor Labs

- *Not supported by Dev Organization*
- *Documentation in Marketplace*

Marketplace – Infor Software

- *Supported by Dev Organization*
- *Documentation in Marketplace*

Standard Products

- *Supported by Dev Organization*
- *Documentation in docs.infor.com*

- *Not supported by Dev Organization*
- *Documentation in KB if any.*

- *Not supported by Dev Organization*
- *Documentation in Marketplace*

- *Supported by Dev Organization*
- *Documentation in Marketplace*

- *Supported by Dev Organization*
- *Documentation in docs.infor.com*

What we have been working on

Knowledge base

- EDI White paper
- EDI MIGs
- Best practices
- 3PL White paper
- TMS White paper
- How-to examples

Marketplace – Infor Labs

- Orderful EDI
- Marel AXIN MES

Marketplace – Infor Software

- Shipwell TMS
- Shopify eCommerce

Standard

- Infor WMS
- Infor TPM
- Infor Rhythm
- Fashion PLM
- Infor Nexus
- SPS Commerce EDI
- Inriver PIM
- HRT Payroll

M3-Shipwell TMS Functional Overview

This integration enables seamless synchronization of **Master Data** and **Transactional Data** between **Infor M3** and **Shipwell TMS**.

Supported Functionalities

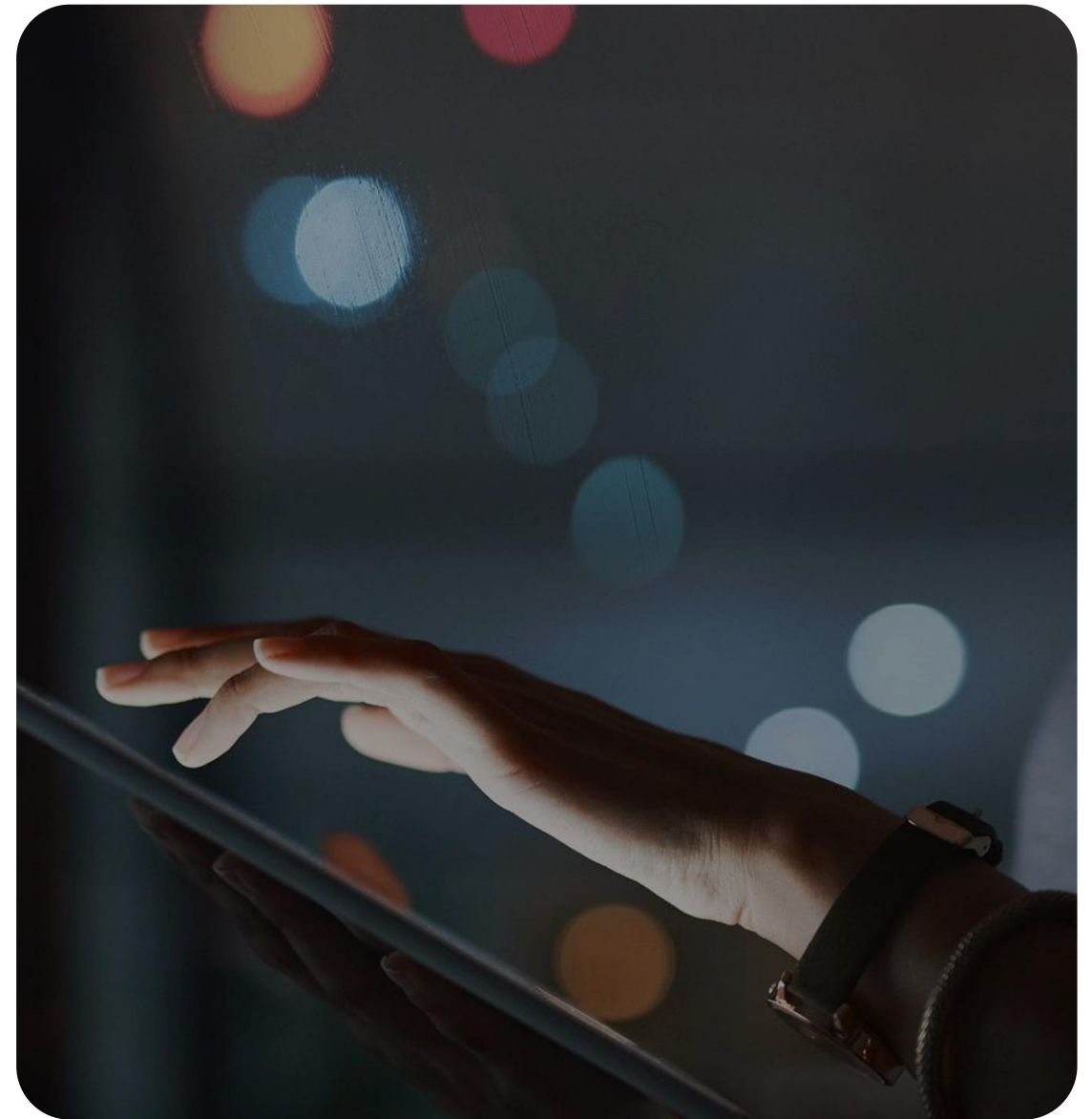
Item, Order, and Shipment **Creation & Update**

Key Benefits

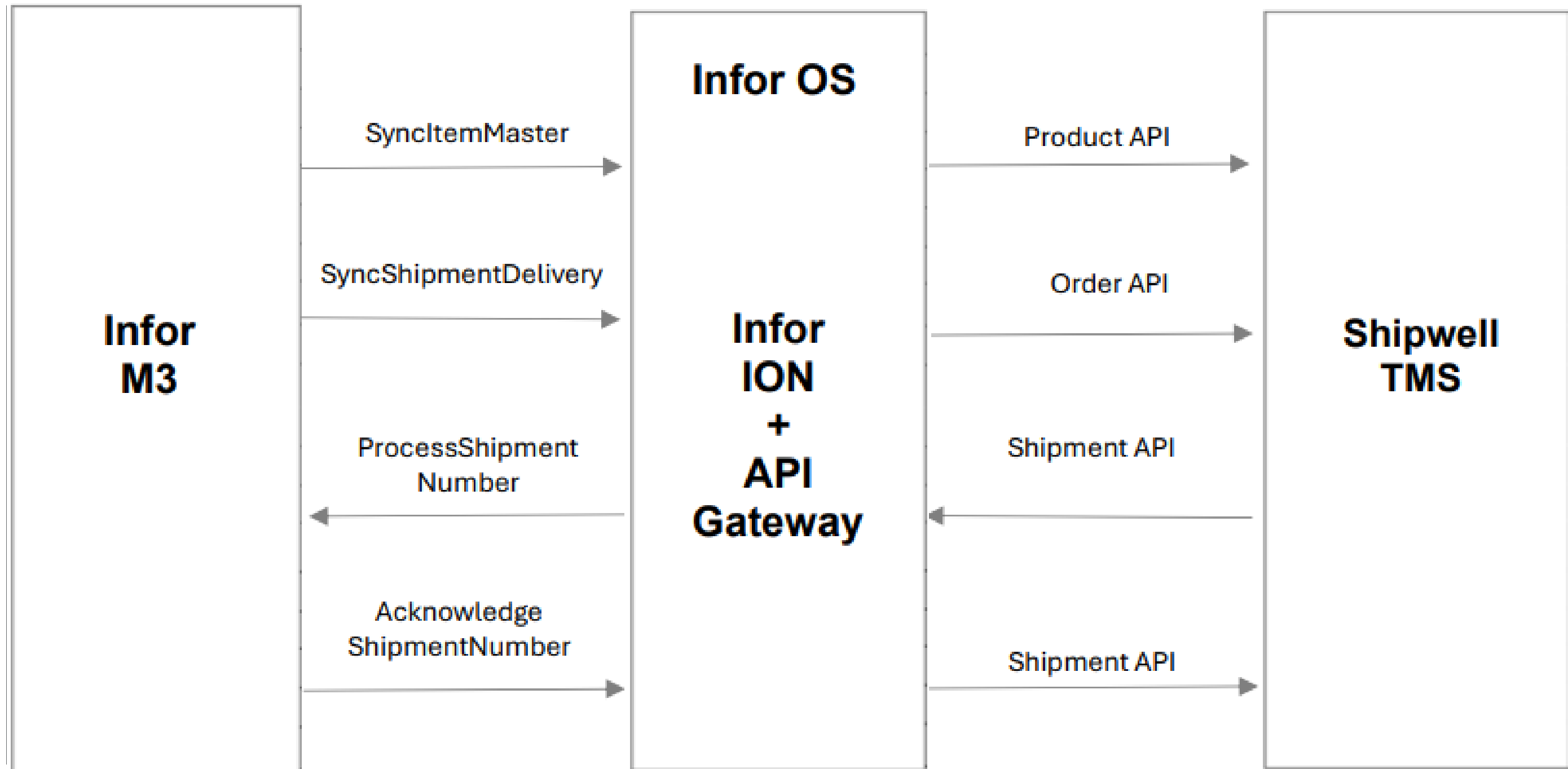
Reduced Manual Effort: Eliminates redundant data entry across M3 and Shipwell

Improved Data Consistency: Ensures standardized master and transactional data across systems

Real-time Visibility: Provides end-to-end visibility of shipments and statuses between applications



Shipwell Integration Touch Points



M3 – Shipwell Freight Rate Shopping SDK

Freight Rate Shopper
Close

Customer Name	Order Number	Shipment Total Weight	Departure Date	Source Address	Destination Address
SW Integration Testing1	0011005676	12.000 KG	03/03/2026	5226 Bethel Center Mall Line2 Columbus Oh 43220	42 Coleman Rd Southampton Ma 01073 United States

Customer Name	Order Number	Shipment Total Weight	Departure Date	Source Address	Destination Address
SW Integration Testing1	0011005676	12.000 KG	03/03/2026	5226 Bethel Center Mall Line2 Columbus Oh 43220 United States Columbus 43220	42 Coleman Rd Southampton Ma 01073 United States Southampton 01073

Mode *

Carriers

[Get Freight Rates](#)

Freight rate details (2 results) 🔍 ...

Carrier Name	Freight Amount	Currency	Estimated Arrival Date	Days In Transit	Mode	Service Code
<input checked="" type="checkbox"/> R+L Carriers	517.50	USD	05/03/2026	2	LTL	Standard Service
<input type="checkbox"/> R+L Carriers	595.73	USD	05/03/2026	2	LTL	Guaranteed Service

[Update Freight Rate](#)

Charge Updated ✕

TMS-I, TMS-E charges are updating on order 0011005676 and MODL, Route ID, Departure are updating in the OIS100/I panel. Please close the Application

https://



M3 Integrations Delivery Highlights 2026.04

Infor

- **WMS**
- Item creation manual steps removed
- Short pick support
- Pack key support
- ABC Class
- No-inventory orders no longer sent to WMS
- Address handling when CO is created from E-Commerce
- Limited Availability, catch weight support

- **Nexus**
- Delivery notes and transport notifications
- Purchase order planning date

- **Generic EDI**
- Purchase order cancel MBM

Other

- **Shipwell**
- Support for Freight rate shopping
- Address book integration

- **Shopify**
- Multiple store under single division
- Discount amount support

- **Salesforce**
- New SF API suite

- **Orderful EDI**
- Grocery product messages 875 and 880
- Warehouse inventory adjustment advice 947

- White paper: Third party WMS
- White paper: Third party TMS

Other enhancements 2026.04

New BOD's

- New BOD
 - Process.SourceSystemJournal Entry
- Enhanced BOD
 - Sync.CustomerPartyMaster
 - Sync.BillToPartyMaster
 - Sync.ShipToPartyMaster
 - Sync.ItemMaster
 - Process.CustomerPartyMaster
 - Process.SalesOrder
 - Sync.M3EDIPurchaseOrder
 - Load.M3EDISalesOrder
 - Load.M3EDIAdvanceShipNotice
 - Sync.M3EDIShipmentDelivery

Other

On going Documentation Enhancements:

- Include sample BOD files and 3P Payload
- Provide enhanced mapping guides even for standard 3P integration
- Split M3 BOD Mapping guides into one PDFs per BOD
- Include Program Name and Panel, Type, Field Length, Bounded or Repeating in the mapping document
- Created BOD Variants document

M3 BE BODs 16.0.0

BOD Content

Numbers (Based on Noun)

- Inbound: 62
- Outbound: 81
- Total Nouns: 143

Numbers (Based on Verb-Noun-Variant)

- Inbound: 79 + 15 Code Definitions = 94
- Outbound: 218 + 137 Code Definitions = 355
- Total BODs: 449



BOD Related KB's

Infor M3 CE Custom BODs	KB2059952
M3 BODs Performance Improvements	KB2232142
Infor M3 Custom BODs Best Practice	KB2278358
BOD Documentation in spreadsheet	KB2238899

M3 Integrations Library (Cloud) | BOD Mapping Guides

Home ← Back → Forward Search All ? Help Copy URL PDF PDF Print

Home

- Infor M3 Inbound BOD Mapping and Descriptions
- Infor M3 Outbound BOD Mapping and Descriptions
- Infor M3 BOD Rules Documentation
- Infor M3 to Infor CPQ Enterprise Quoting Cross BOD Mapping and Descriptions
- Infor M3 to Infor CRM Cross BOD Mapping and Descriptions
- Infor M3 to Infor EDI Exchange Cross BOD Mapping and Descriptions
- Infor M3 to Infor EPM Cross BOD Mapping and Descriptions
- Infor M3 to Infor Expense Management Cross BOD Mapping and Descriptions
- Infor M3 to Infor Governance, Risk and Compliance for Authorization Insight Cross BOD Mapping and Descriptions
- Infor M3 to Infor Governance, Risk, and Compliance for Process Insight Cross BOD Mapping and Descriptions
- Infor M3 to Infor Governance, Risk, and Compliance for Process Insight Cross BOD Mapping and Descriptions

docs.infor.com Send Feedback on Current Topic Product Support About

Platform updates

M3 Integration platform deliveries highlights 2026.04

Enterprise Collaborator

- Health service links to message details (new UI)
- Data Translation open Limits
- Data Translation usage statistics
- Mapper improvements
 - Notification on last publisher if it's not you.
 - Show last publisher information in Import map list dialog
 - Server preferences Aliases
- Mapping audit log (Saved/published , when, by whom)
- Config UI in Web Components
- Import message with parameters.
- New logger configuration UI

Other

- **Event Hub**
 - Improved browse events
- **Event Analytics**
 - Enhanced rule validation

DEMO AI scripting

Script AI_Generated_By_Erik

← 📄 🗑️ 🔄 ↗️ USAGE

Name: *

AI_Generated_By_

Description:

Scripting uses P

Versions

1. Draft

MAR 5, 2026, 10:5

ERIK STANZE

Generate Script

Clearly state what the script should do *

Generate a plain Python script to convert string input_xml to output_json.

Crucial: If schema files are provided, map the fields accordingly; otherwise, use a standard generic parsing method. Do not include any sample data or define [input_var] in the code.

Characters left 9742

Convert XML to JSON Convert JSON to XML

Create a script Refine script

Show Less

Upload File

Drag and drop here or [upload files](#)

Generate

Generated Script

Copy Clear

```
import json
import xml.etree.ElementTree as ET

def xml_to_json(input_xml):
    """
    Converts an XML string to a JSON string.

    Args:
        input_xml (str): The XML input string to be converted.

    Returns:
        str: The JSON output string.
    """
    root = ET.fromstring(input_xml)
    json_data = {}
```

Additional Information

This script provides a function to convert an XML string to a JSON string. It uses the built-in `xml.etree.ElementTree` module to parse the XML and the `json` module to generate the JSON output.

The `xml_to_json()` function takes an XML string as input and returns the corresponding JSON string. It uses a recursive helper function `_traverse_xml()` to traverse the XML tree and build the JSON data structure.

Responses may be based on Infor data but are AI generated. Verify the information.

Close Insert

Enhanced Browse Events

This release introduces a new browse events user interface including additional filter criteria.

Change Delivery	Available for CloudSuite(s)	Potential Business / Tech. Impact
Automatic change	All M3 CloudSuites	No impact expected
Additional Info	Decision maker	Release Training
3666425	IT	Infor U

Problem



- Previously, you could only select subscriptions and specify a start time as filter criteria.
- You had to scroll down the event list repeatedly to load many events using an infinite scrolling pattern.
- You had to export the loaded events to filter them and view the elements in detail using Excel or a text editor.

Solution



- In addition to the start time, you can now specify a time span from 1 to 60 minutes.
- It is possible to specify filtering criteria using the same language as used in Event Analytics.
- The events are loaded gradually until all events are loaded. You can stop or pause the loading of events.
- Loaded events can be filtered in the event list view.
- Event elements can be viewed in a separate text field. This can in turn be copied to your clipboard.

Benefits



- By using filtering criteria, you can, for example, filter the events to be loaded on a specific item number.
- You can filter the loaded events by publisher, document, operation, elements and tracking ID.
- By selecting one to 10 events, you can filter all events by the tracking IDs of the selected events to track them easier when troubleshooting.
- You can view the elements of an event in a separate text field, which you can also format to show one element per line.

Browse Events Administration

Subscriptions

Subscription Selection

Available subscriptions

Search Available subscriptions

- M3:CINBUACINHED
- M3BODProcessor:ShowCodeDefinitionCustomStatNumbr
- M3:m3_strategyplanning01_14_10_47_MetricStructure
- M3:m3_7790_strategyplanning_MetricStructure
- M3:FBSREM
- M3BODProcessor:SyncAdvanceShipNotice

Selected subscriptions

Search Selected subscriptions

- M3:MITMAS
- EventAnalytics:TimeCorrelation
- EventAnalytics:M3BEBOD
- M3BODProcessor:SyncItemMaster

Start Time: 2026/02/20 17:36 | Time Span (minutes): 10 | Filtering Criteria: ITNO = 'Y1001-Y01-010' | **Get Events**

Events

Timestamp	Publisher	Document	Operation	Elements	Publication Ti...	Trackin
2026-02-20T17:37:01.114	M3	MITMAS	UPDATE	startProgram=MMS001;currentProgram=MITMASPI;jobCONO=7	2026-02-20T17:3	5f09bbca
2026-02-20T17:37:04.258	EventAnalytics	TimeCorrelation	REQUEST	CONO=770(770);ITNO=Y1001-Y01-010(Y1001-Y01-010);applicatio	2026-02-20T17:3	5f09bbca
2026-02-20T17:37:30.700	EventAnalytics	M3BEBOD	UPDATE	CONO=770(770);ITNO=Y1001-Y01-010(Y1001-Y01-010);applicatio	2026-02-20T17:3	5f09bbca
2026-02-20T17:37:31.750	M3BODProcessor	SyncItemMaster	UPDATE	CONO=770(770);DIVI=AAA;ITNO=Y1001-Y01-010(Y1001-Y01-010);	2026-02-20T17:3	5f09bbca
2026-02-20T17:37:31.750	M3BODProcessor	SyncItemMaster	UPDATE	CONO=770(770);DIVI=BBB;ITNO=Y1001-Y01-010(Y1001-Y01-010);	2026-02-20T17:3	5f09bbca

Road map and plans

M3 Integrations roadmap 2026.10

Infor

- **M3 – TPM New Integration**
- **M3 – Infor HRT Payroll New Integration**

- **WMS**
- Catch weight support
- Support for different SOR ownership for Shipment
- PO-receipt reversal in Inbound BOD
- Integration support for Hazardous items information.
- Lot update if missing in ASN
- Enhancement to inbound SyncShipment – Process succeeding lines despite previous fail
- Support for KIT handling
- M3 attribute support enhancement.
- Item substitution at picking
- Support for update of expiry date and manufacturing date outbound ASN
- Real time error feedback

- Other
- Nexus Master data improvements
- PLM For Fashion BOM integrations

Other

- **Shipwell**
- Documents from Shipwell to IDM
- Accounting information

- **Shopify**
- Product variants support

- **Orderful EDI**
- Procure to pay via Mosaic

M3 Integration platform roadmap

Enterprise collaborator

- 2026.10
- Context tagging in ACM
- Message reorder, configurable wait time
- Admin UI - Message search - Message details improvements - Bulk export message logs
- IEC APIs - Message operation - Mapping lifecycle
- Mapping compare

- 2027.04 and beyond
- Built-in test framework
- Mock testing in mapper
- Insights, Statistics, and Metrics
- Deep assign / Map inheritance
- Map compare and merge.
- Faster code whitelist turnaround time
- Web Components continued
- Data lake enablement

Other

- 2026.10 and beyond
- Public API's EH, EA, BODProcessor
- Enhanced Configuration Management Tags context widget (for IEC too).

Where to find information

- All integration guides can be found at docs.infor.com [M3 Integrations Library](#)
- Visit our best practice
- [KB 2017962](#), M3 Integration and Infor OS content
- [KB2023035](#) Infor M3 Core Implementation Guide for EDI messages White Paper
- Always subscribe to [Infor M3 - Cloud Updates \(AWS\)](#) KB1952072

Questions and Answers

Q&A



Thank you

Infor is a global leader in business cloud software specialized by industry.

[infor.com](https://www.infor.com)

